

Table of Contents – Open Agenda

Agenda.....	Page 1
Minutes from Tuesday September 9th, 2025.....	Page 3
7.2 Payment Register.....	Page 9
8.1 Clerk’s Report.....	Page 10
8.2 Treasurer’s Report.....	Page 12
8.3 Public Works Report.....	Page 13
8.6 Correspondence from other Agencies.....	Page 14
8.6-1 Statement from NOMA – Wendy Bell	Page 14
8.6-2 Request for support for CHRS initiative	Page 17
8.6-3 NOMA – Nation Building Projects Renews Call for Action – 11/17.....	Page 21
8.6-4 TBDHU Minutes June 18, 2025.....	Page 23
8.6-5 TBDSSAB Minutes June 19, 2025.....	Page 30
8.6-6 NOMA – Kap Paper – Forestry.....	Page 40
9.1 Report to Council – Criterion Movie Licencing.....	Page 42
9.2-1 Clerk’s Report - Structural Inspection – Two Bridges and One Culvert	Page 44
9.2-2 Structural Inspection Report.....	Page 47
10.1 Bylaw 2025-032 - 2025-032 Bylaw - Appointment of Integrity Commissioners.....	Page 120
15. Confirming Bylaw 2025-031.....	Page 122

1
AGENDA FOR REGULAR COUNCIL MEETING
Tuesday, September 23, 2025 – 6:00 p.m.



Join Zoom Meeting: <https://us02web.zoom.us/j/83722673718?pwd=uBXJZEYbk5b57jY3DqGWCpL7xELRKV.1>

Meeting ID: 837 2267 3718

Passcode: 705347

1. CALL TO ORDER
Land Acknowledgement
2. APPROVAL OF AGENDA
Recommendation: BE IT RESOLVED THAT the agenda for the Regular Council Meeting of September 23rd, 2025, be approved as circulated. (Alternatively, amendments to be noted; with approval as amended.)
3. DECLARATIONS OF PECUNIARY INTEREST
4. TOWN HALL SEGMENT
5. DEPUTATIONS
6. MINUTES OF PREVIOUS MEETINGS
 - 6.1 Minutes – Open Session Regular Council Meeting – September 9th, 2025
Recommendation: BE IT RESOLVED THAT the Minutes of the Open Session of the Regular Council Meeting held on September 9th, 2025, be approved as circulated. (Alternatively, corrections to be noted; with approval as amended.)
7. DISBURSEMENT LIST
 - 7.1 Payroll Report (no report this meeting)
 - 7.2 Payment Register
Recommendation: BE IT RESOLVED THAT Council approve the disbursements represented by electronic bank payments and check numbers 7566 to 7581 totalling \$58,779.09.
8. REPORTS FROM MUNICIPAL OFFICERS/OTHERS (As available)
 - 8.1 Clerk's Report
 - 8.2 Treasurer's Report
 - 8.3 Public Works Report
 - 8.4 Fire Chief's Report (no report this meeting)
 - 8.5 Council Member Reports (verbal)
 - 8.6 Reports from Other Agencies: as listed in the Clerk's Report
Recommendation: BE IT RESOLVED THAT Council receive the reports presented as listed in Section 8 of this evening's agenda. (Alternatively, directions to Administration as per Council's determination)
9. NEW BUSINESS
 - 9.1 Clerks Report – Criterion Movie Licencing Options
 - 9.2-1 Clerks Report – Structural Inspection – Two Bridges and a Culvert
 - 9.2-2 Structural Inspection Report from JML – Two Bridges and One Culvert
10. BYLAWS
 - 10.1 2025-032 Bylaw - Appointment of Integrity Commissioners
11. CORRESPONDENCE
List of Resolution Support Requests from other municipalities/provincial government
No resolutions provided for this meeting.
12. UPCOMING MEETING DATES
Regular Council Meetings: October 14th and 28th; November 12th (Wed) & 24th; and December 16th, 2025.

13. CLOSED SESSION

Recommendation: BE IT RESOLVED THAT, the time being ____ p.m., Council enter Closed Session under the authority of those paragraphs of the Municipal Act, 2001, S.O. 2001, c. 25, as amended, for which the meetings were closed, to consider Item 13.1, being the Closed Session minutes of the Council meeting held September 23rd, 2025; and under the authority of paragraph 239(2)(b), 239(2)(d), 239(2)(h) of the same legislation, to consider Items 13.2, 13.3, and 13.4 involving personal matters about identifiable individuals, and/or involving labour relations or employee negotiations, and involving information explicitly supplied in confidence to the municipality by another level of government.

13.1 Minutes – Closed Session Regular Council Meeting – September 9th, 2025

13.2 Clerk's Report – NOHFC Grant

13.3 Treasurer's report NOHFC Grant - Enhancement

13.4 HR Assistant's Report - Negotiations

Recommendation: BE IT RESOLVED THAT, the time being ____ p.m., Council rise from Closed Session and report in Open Session

14. BUSINESS ARISING FROM CLOSED SESSION

Recommendation 1: BE IT RESOLVED THAT the Minutes of the Closed Session of the Regular Council Meeting held on September 9th, 2025, be approved as circulated. (Alternatively, corrections to be noted; with approval as amended.)

Recommendation 2: BE IT RESOLVED THAT Administration be authorized to proceed as directed in Closed Session.

15. CONFIRMING BYLAW

By-law 2025-033 – To Confirm the Proceedings of the Meeting

Recommendation: BE IT RESOLVED THAT Bylaw 2025-033 be passed, and FURTHER, THAT the Mayor and the Clerk be authorized on behalf of the Township of Conmee to affix their signatures to By-law No. 2025-033, being a By-law to confirm the proceedings of this evening's meeting.

16. ADJOURN

Recommendation: There being no further business to conduct, the Mayor declares the meeting to be adjourned at ____ p.m.

MINUTES - REGULAR COUNCIL MEETING

Tuesday, September 9th, 2025 – 6:00 pm

PRESENT Mayor Sheila Maxwell
Councillor Grant Arnold
Councillor Chris Kresack
Councillor David Maxwell

ALSO PRESENT Karen Paisley, Clerk
Leanne Maxwell, Treasurer

PRESENT VIRTUALLY Olabisi Akinsanya-Hutka, HR Assistant

1. **CALL TO ORDER**

Mayor Maxwell called the meeting to order at 6:02 p.m.
Mayor Maxwell provided a statement of land acknowledgement.

2. **APPROVAL OF AGENDA**

Mayor Maxwell proposed an amendment to the agenda to include Item 9.3 under New Business, regarding the Natural Gas Expansion Consultation. A draft resolution, letter of support, and submission materials were provided for Council's consideration. With no further amendments, Council approved the agenda as amended.

RESOLUTION 2025 – 182

Moved by: Councillor Maxwell

Seconded by: Councillor Arnold

BE IT RESOLVED THAT the agenda for the regular council meeting of September 9th, 2025, be approved as amended.

CARRIED

3. **DECLARATIONS OF PECUNIARY INTEREST**

No declarations were made.

4. **TOWN HALL SEGMENT**

A gift was arranged for Chief Day to celebrate the birth of his child. As Chief Day was attending training, he was unable to attend this meeting. Council noted that he would be advised to pick up the gift from the municipal office at his convenience. No other members of the public had registered to speak during the Town Hall Segment.

5. **DEPUTATIONS**

No deputations were scheduled for this meeting.

6. **MINUTES OF PREVIOUS MEETING(S)**

6.1 **Minutes – Regular Council Meeting – August 26th, 2025**

Council present reviewed the minutes of the August 26th, 2025, Regular Council Meeting. No amendments were requested.

RESOLUTION 2025 - 183

Moved by: Councillor Maxwell

Seconded by: Councillor Arnold

BE IT RESOLVED THAT the minutes for the open session portion of the regular council meeting of August 26th, 2025, be approved as circulated.

CARRIED

7. **DISBURSEMENT LIST**

7.1. Payroll Report

Council reviewed the payroll report. There were no questions for the treasurer.

7.2. Payment Register

Council reviewed the payment register, including electronic bank payments and cheque disbursements.

The Treasurer answered questions from Council.

RESOLUTION 2025-184

Moved by: Councillor Kresack

Seconded by: Councillor Arnold

BE IT RESOLVED THAT Council approved the disbursements represented by electronic bank payments, cheque numbers 7550 to 7565 totalling \$32,805.99.

8. **REPORTS FROM MUNICIPAL OFFICERS**

8.1. Clerk's Report

The Clerk reported that KEM Construction had been notified as the successful bidder for the food bank loading dock project, with work expected to begin in mid-October. Updates were provided on the burn permit and fireworks bylaw review, with input received from neighbouring municipalities. The Clerk requires more time to complete the review. The Clerk and Treasurer registered for the AMCTO Zone 9 Fall Meeting, opting not to attend the optional workshop. The Clerk was honoured to nominate the Rural Cupboard Food Bank as the charity of choice for the Zone 9 meeting. Promotional efforts for the September 27 Farmers' Market and Yard Sale were underway, including outreach to neighbouring municipalities and local businesses. Interest in Food Cyclers units continued, and the Clerk had begun reviewing movie licensing options, including a meeting with Criterion Pictures. Item 8.6, other agency reports listed in the Clerk's report were reviewed following the Clerk's report. The LRCA draft budget in Item 8.6 was noted, with a 1.2% increase in Conmee's levy.

8.2. Treasurer's Report

The Treasurer presented the arrears report, noting a decrease in outstanding balances since the last update. She also brought forward proposed holiday hours for Council's consideration. Council discussed holiday hours and agreed to close the landfill on Christmas Eve, Wednesday, December 24, 2025, as it was expected to be a quiet day with limited public demand. However, Council decided not to close the landfill early on New Year's Eve, opting to maintain regular operating hours for that day. Office staff will continue the past practice of closing at 1:00 p.m. on both Christmas Eve and New Year's Eve. A notice to residents will be posted.

8.3. Public Works Report

Although no formal report was submitted by the Public Works Manager, Mayor Maxwell provided updates on two items. First, she advised that Public Works would assist with transporting fire trucks for scheduled pump testing on Wednesday, September 10. Both staff members hold DZ licenses, and their support would prevent the trucks from being out of service for multiple days. Second, Mayor Maxwell reported that a resident had requested assistance with demolishing an old trailer. The Public Works Manager recommended that the Township undertake the work on a cost-recovery basis, similar to previous arrangements for driveway work. The task would be completed once the backhoe is back in service, and the Treasurer would prepare an invoice based on Public Works' equipment usage and time.

8.4. Fire Chief's Report

Chief Day was unavailable for this meeting but submitted a written report for Council's consideration. Pumper 75 is undergoing brake caliper repairs and is awaiting parts. The truck remains operational in the interim. Council also discussed mutual aid concerns and the challenges of maintaining adequate volunteer staffing levels.

8.5. Council Member Reports

Mayor Maxwell reported on several recent activities. She attended a meeting on August 29 with Councillor Maxwell, Clerk Paisley, and HR Assistant Akinsanya-Hutka to prepare for upcoming union negotiations. She also assisted with the relocation of freezers at the Community Centre on August 31, noting that the process went smoothly and the new equipment fit well. Mayor Maxwell confirmed her attendance at the upcoming meeting at the Ontario Fire Marshal's office on September 11 and the CUPE contract negotiations on September 15. She also plans to attend the District Municipal League meeting on September 16 and will volunteer as a bartender at the baseball banquet on September 13. She highlighted upcoming community events including the Farmers' Market and Yard Sale on September 27, a Harvest Fun Day on October 18, and a Halloween party for children on October 25.

Councillor Arnold reported attending the LRCA pre-budget meeting on August 27, where Conmee's levy increase was confirmed to be modest compared to other municipalities. He noted that Conmee and O'Connor had similar rates. He plans to attend the District Health Unit meeting on September 15 and emphasized the importance of lowering the flag for Remembrance Day. He also mentioned the need to prepare the Remembrance Day display in the Community Centre.

Councillor Kresack apologized for missing the last two Council meetings and advised that he would be attending Food Bank meetings now that their monthly schedule has resumed, starting Wednesday, September 10.

Councillor Maxwell participated in the freezer relocation at the Community Centre on August 31 alongside Mayor Maxwell. He confirmed his attendance at the September 15 union negotiations and the District Municipal League meeting on September 20. He also volunteered to bartend at the baseball banquet. Councillor Maxwell expressed support for the upcoming community events and confirmed his involvement in the Farmers' Market and Yard Sale on September 27.

8.6. Other Agencies' Reports

Council reviewed the other agency reports. These reports were listed in the Clerk's Report to Council. The reports were provided primarily for information purposes.

RESOLUTION 2025-185

Moved by: Councillor Maxwell

Seconded by: Councillor Kresack

BE IT RESOLVED THAT Council received the reports presented as listed in Section 8 of this evening's agenda.

CARRIED

HR Assistant joined the meeting at 6:45 p.m.

9. NEW BUSINESS

9.1 Councillor Leave of Absence – Legislative Overview and Vacancy Process

Council reviewed a report from the Clerk outlining the provisions of the Municipal Act regarding a councillor's leave of absence. The Act permits Council to authorize an absence of up to three consecutive months without the seat being declared vacant. Council discussed the matter in general terms and acknowledged that the topic may need to be revisited depending on future circumstances.

9.2 Sarjeant Propane – 2025-26 Propane Contract

Council reviewed the proposed 2025–2026 propane contract from Sarjeant Propane. The Clerk clarified that the item was mistakenly marked as a closed matter in the report. Council agreed the pricing was favourable and supported proceeding with the contract.

9.3 Natural Gas Expansion Program

Council discussed the opportunity to participate in Phase 3 of Ontario's Natural Gas Expansion Program. A draft resolution, submission responses, and letter of support were reviewed. Council voted to support the initiative and directed staff to submit the necessary documentation before the September 22 deadline.

RESOLUTION 2025-186

Moved by: Councillor Maxwell

Seconded by: Councillor Kresack

WHEREAS the Province has posted ERO 025-0923, *Consultation on the Future of Community Natural Gas Expansion*, seeking feedback from municipalities, Indigenous communities, and other stakeholders on how Phase Three (3) could best support access to natural gas for community development;

AND WHEREAS expanding access to natural gas is identified as a tool to support affordability and economic growth in Ontario communities, with Phases One (1) and Two (2) estimated to enable connections for approximately 17,000 buildings across 59 communities, and 16 projects completed to date;

AND WHEREAS the Township of Conmee is working toward its housing and employment land goals, including supporting rural residential development and small-scale commercial and agricultural operations, which contribute to Ontario's broader objective to build at least 1.5 million homes by 2031. Timely servicing solutions—including natural gas where appropriate—can help enable these targets and support long-term community sustainability;

AND WHEREAS Ontario's energy future relies on a balance of affordability, reliability, and sustainability by leveraging a mix of energy solutions—including natural gas, electricity, and emerging energy technologies—to meet growing community needs. Natural gas continues to play a critical role in supporting energy affordability, economic competitiveness, and enabling housing and employment growth across the province;

THEREFORE BE IT RESOLVED THAT Council:

- **Supports** the Ministry's consultation on the Future of Community Natural Gas Expansion (NGEP Phase 3) and endorses access to natural gas as an option to other energy solutions to advance Conmee's housing, agricultural, and economic development objectives;
- **Directs staff** to submit comments to ERO 025-0923 reflecting Conmee's priorities, including: priority application types, alignment with the Official Plan, sites and corridors where gas access would enable development, and any practical barriers (e.g., timing, permitting, costs, land access);
- **Forwards this resolution** to Thunder Bay–Atikokan MPP Kevin Holland, the Minister of Energy and Mines, the Ontario Energy Board, AMO, and neighbouring municipalities.

CARRIED

10. BY-LAWS

10.1 Bylaw 2025-030 – Bylaw to Accept a Gift of Land

Council reviewed Bylaw 2025-030, being a bylaw to accept a gift of land located on Mokomon Road. It was confirmed that the property is not landlocked and has road access. No concerns were raised.

RESOLUTION 2025-187

Moved by: Councillor Maxwell

Seconded by: Councillor Kresack

BE IT RESOLVED THAT Bylaw 2025-030, being a bylaw to accept a gift of land, be given first, second, and third reading and be passed.

CARRIED

11. CORRESPONDENCE

List of Resolution Support Requests from other Municipalities

Council reviewed the following resolutions for support:

11.1 Council reviewed a resolution from the Township of Tweed regarding sustainable waste management. After discussion, Council determined that the initiative was not suitable for a municipality of Conmee's size and declined to support it.

UPCOMING MEETING DATES

The list of upcoming regular Council meeting dates was available for review. No changes were proposed.

13. CLOSED SESSION

RESOLUTION 2025-0188

Moved by: Councillor Kresack

Seconded by: Councillor Maxwell

BE IT RESOLVED THAT the time being 7:16 p.m., Council moved into closed session, under the authority of those paragraphs of the *Municipal Act, 2001* (S.O. 2001, c. 25, as amended) for which it was authorized to be closed, to review Item 13.1, being the Closed Session minutes of the Council meeting held August 26th, 2025; and under the authority of paragraph 239(2)(b), 239(2)(d), and 239(2)(h) of the same legislation, to consider Item 13.2, Item 13.3, Item 13.4 and Item 13.5 as listed in the agenda, involving personal matters about identifiable individuals, involving labour relations or employee negotiations, and information explicitly supplied in confidence to the municipality by Canada, a province or territory or a Crown agency.

CARRIED

During closed session, the following procedural resolution was passed:

RESOLUTION 2025-189

Moved by: Councillor Arnold

Seconded by: Councillor Kresack

BE IT RESOLVED THAT, the time being 8:07 pm, Council rise from closed session and report in open session.

CARRIED

Open session resumed.

14. REPORT FROM CLOSED SESSION

RESOLUTION 2025-190

Moved by: Councillor Arnold

Seconded by: Councillor Kresack

BE IT RESOLVED THAT the Closed Minutes of the Regular Council Meeting held on August 26th, 2025, be approved; AND, FURTHER, THAT Administration be authorized to proceed as directed in closed session.

CARRIED

15. CONFIRMING BY-LAW

By-law 2025-031

RESOLUTION 2025-191

Moved by: Councillor Kresack

Seconded by: Councillor Maxwell

BE IT RESOLVED THAT By-law 2025-031 be passed;

AND, FURTHER, THAT the Mayor and Clerk be authorized on behalf of the Township of Conmee to affix their signatures to By-law No. 2025-031, being a By-law to confirm the proceedings of this evening's meeting.

CARRIED

16. ADJOURNMENT

There being no further business to attend to, the mayor declared the meeting adjourned at 8:11 pm.

Mayor Sheila Maxwell

Clerk Karen Paisley

Township of Conmee

Payment Register

Report Date

Batch: 2025-00136 to 2025-00143 2025-09-19 9:42 AM

Bank Code: GEN - TD Operating Account

	Payment #	Vendor	Amount	
Computer Cheque				
	7566	Bay City Contractors	13,546.12	
	7567	Kakabeka Esso	27.58	
	7568	MicroAge	391.66	
	7569	Municipality Oliver Paipoonge	566.98	share of radio
	7570	AIG Insurance Company	3,246.48	VFD
	7571	BMO RRSP	134.54	
	7572	TransCanada Safety	257.19	fire dept
	7573	Atwood Labine LLP	926.60	gift of property
	7574	Con Scolaire Pub du Grand Nord	93.68	
	7575	De Lage Landen Financial Serv	1,021.54	
	7576	Lakehead Board of Education	25,668.90	
	7577	Nova-Pro Industrial Supply Ltd	763.88	landfill signs
	7578	PSD Citywide Inc.	2,881.50	AMP
	7579	TBay Catholic Dist School Bd	591.04	
	7580	Ultramar	2,277.48	
	7581	Xerox Canada Ltd	38.31	
		Total Cheques	52,433.48	
Other				
	3	TD Visa	403.72	
	10	TD Visa	1,212.75	
	45	TD Visa	778.96	
	123	TD Visa	712.48	
	172	TD Visa	517.78	
	392	TBayTel	133.33	
	398	TBayTel	256.94	
	473	Hydro One Networks	127.24	
	531	TD Visa	429.44	
	859	Bell Canada	94.99	
	882	Hydro One Networks	193.39	
	885	Hydro One Networks	1,484.59	
		Total EFT	6,345.61	
			58,779.09	

**The Corporation of the Township of Conmee
Administrative Report**

Date: September 23, 2025

To: Mayor and Council

Subject: Administrative Activity Report

File Number: 01-C10-0000 Administrative Activity Reports

Submitted by: Karen Paisley Clerk

RECOMMENDATION:

For Council's information and direction as required.

BACKGROUND:

Administration's updates to Council on its ongoing activities

DISCUSSION:

Since the last Council meeting, the Clerk has been managing several administrative matters. On Thursday, September 11, the Clerk attended a meeting with representatives from the Office of the Fire Marshal. This meeting was also attended by Mayor Maxwell and Chief Day. Some of the discussion focused on grant opportunities and mutual aid arrangements with neighbouring municipalities.

On Monday, September 15, CUPE negotiations were held with Mayor Maxwell, Councillor Maxwell, and the HR Assistant. The following day, Tuesday, September 16, the LRMC meeting took place. One of the key topics discussed was animal control. The City of Thunder Bay advised that it is unable to assist rural municipalities with impounding dogs. Conmee Township has not had to respond to many at-large animal calls in recent months, with very few incidents reported over the past nine months. The Clerk recommends that Council seek direction from the bylaw officer regarding how impound situations should be handled, should they arise. While other municipalities use a three-strike rule, it is currently unclear what approach Conmee's bylaw officer takes. The Mayor of Oliver Paipoonge noted that she has cages available for large animals if needed.

The designated truck route was also briefly discussed. Oliver Paipoonge had met with support staff from the Ministry of Transportation, but no resolutions were provided by the MTO staff. The Clerk has circulated the final version of the designated truck route bylaw to other municipal clerks, as an opinion was expressed at the LRMC meeting that the bylaw may not yet be finalized.

The Rural Action Plan was another topic of discussion. While some municipalities refer to this as the "enabling bylaw," the Clerk knew it as the Fire Department Bylaw. The Acting Clerk previously reviewed the draft bylaw and made recommendations to Council at the April 1st meeting. The following excerpt from the Acting Clerk's report is provided verbatim:

“Ideally, the participating Councils should have a joint meeting with all members of each Council present, and each Fire Chief present, to allow a fulsome discussion and to facilitate having identical wording being passed by each Council (a similar process was undertaken when the Lakehead Police Service Board was established). The Acting Clerk understands that this will be discussed at the next LRMC meeting. It is recommended that the possibility of a joint Council meeting be discussed with the mayors and heads of administration at that meeting. If it proves impossible to schedule a joint meeting with all Councils, each Council will individually pass their version of the bylaw at separate meetings. These should be co-ordinated carefully to enable consistency. Each Clerk should be requested to provide a copy of the bylaw as passed by their Councils to each other Clerk after their respective meetings, and to advise whether any amendments were made (and what those amendments).”

The Clerk is requesting Council’s direction on how to proceed with the draft enabling bylaw.

The next LRMC meeting is scheduled for November 18 at 5:30 p.m.

The Clerk has completed the aggregate assessment reports for the Ministry of Natural Resources ahead of the September 30 deadline. Work has also been ongoing on several grants. One such grant is the FireSmart grant for \$15,000, which was listed among open grants and successfully applied for before the September 30 deadline. Another opportunity, also due September 30th, is the Emergency Preparedness Grant for \$150,000. This grant was invitation-only and not listed for the municipality on TPON. Following direction from MNR representatives who had invited Conmee to apply on September 17th, the Clerk sent an email to TPON requesting that the grant be added to the municipality’s list so that an application can be submitted before the deadline. A ticket has been submitted to TPON and is currently being processed.

Additionally, the Clerk is working with the Fire Chief to apply for the Fire Protection Grant, which supports firefighter health and safety, with a particular focus on cancer prevention. This grant is also due on September 30th. Quotes are currently being obtained for drying bunkers for gear, and a shower retrofit for the fire station bathroom. Once these are provided, the grant will be submitted.

The Clerk is also preparing agreements for the Integrity Commissioners, which will be included as addenda to the bylaw once they have been reviewed by the Commissioners and Council. Correspondence has been received requesting a letter of support for the proposed extension of the Canadian Heritage Rivers System designation to include the Lake Superior to Lake of the Woods Waterway. This initiative emphasizes the cultural, natural, and recreational significance of the waterway, which includes the Kaministiquia River. Letters of support are being sought from municipalities, Indigenous and Métis Nations, heritage and conservation organizations, and other stakeholders. Council’s direction is requested regarding Conmee’s participation in this initiative.

Other Agency Reports – 8.6

1. Statement from NOMA on the passing of Former Marathon Mayor and NOMA Past President Wendy Bell.
2. (a) Request for support for CHRS initiative
(b) Background – Request for support for CHRS initiative
3. NOMA - Nation-Building Projects, Renews Call for Urgent Action on Highway 11/17
4. TBDHU Minutes – June 18, 2025
5. TBDSSAB Minutes – June 19, 2025
6. NOMA – Kap Paper - Forestry

**The Corporation of the Township of Conmee
Administrative Report**

Date: September 23, 2025

To: Mayor and Council

Subject: Treasurer Report

Submitted by: Leanne Maxwell

RECOMMENDATION:

This report is for Councils information and discussion

BACKGROUND:

The Treasurer reports to Council, at regular council meetings, as necessary, on her activities

FOR INFORMATION

Munisoft

We are having our General Ledger upgraded by Munisoft. This also involves MicroAge as it goes on the server. It will be happening on November 13 and 14. They advise to close the office, but we don't think it will be necessary. Notices will be sent out advising that (financial) services will be limited and any payments can be issued written receipts.

UPCOMING DATES

Friday, September 26, 2025 – vacation

Thursday, October 2 – Friday, October 3 – Zone 9 Fall Meeting

Public works Manager's Report

13

Sept 23-25

Roads

- Grading
- Haul gravel
- Closer at Cemetery
- Put up more new signs
- Take garbage to landfill
- work at Hunt Pit
- Put in Driveway entrance
- Burn Brush at landfill

Equipment

- Two Ton for safety

From: [Jason Veltri](#)
Subject: ,
Date: September 10, 2025 3:37:34 PM
Attachments: [image001.png](#)
[image002.png](#)

Good afternoon,

Please see a Statement from NOMA on the passing of Former Marathon Mayor and NOMA Past President Wendy Bell.

,

September 10, 2025 - Thunder Bay, ON — The Northwestern Ontario Municipal Association (NOMA) is deeply saddened to learn of the passing of Wendy Bell, former Mayor of Marathon and Past President of NOMA.

Wendy was a trailblazer whose leadership left a lasting mark not only on the Town of Marathon but on communities across Northwestern Ontario. As Mayor during the Hemlo gold boom, she successfully championed the Hemlo Bill, ensuring that mining tax revenues directly supported local municipalities. Her efforts delivered transformative community infrastructure, from health and public safety facilities to recreational amenities, leaving a legacy that continues to benefit residents today.

Beyond municipal politics, Wendy's contributions were far-reaching. She co-founded CFNO Radio, which connected and uplifted communities across the North with positive local programming, and she dedicated her time to hospital boards, provincial commissions, and countless community causes. Her work embodied the values of service, resilience, and innovation that continue to guide NOMA's mission.

NOMA President Rick Dumas said:

"Wendy Bell's vision and determination helped shape the future of our region. Her advocacy for fair resource revenue sharing and her deep commitment to her community and Northern Ontario have had a lasting impact. On behalf of the NOMA Board, we extend our heartfelt condolences to her husband Spence, her children, grandchildren, extended family, friends, and all who had the privilege of knowing her. Wendy will be remembered as a strong voice for Northern Ontario and a true champion of municipal leadership."

The Northwestern Ontario Municipal Association honours Wendy's remarkable

contributions and mourns the loss of an extraordinary leader, colleague, and friend.



Jason Veltri
Executive Coordinator

(807) 683 - 6662
www.noma.on.ca
admin@noma.on.ca

**NORTHWESTERN
ONTARIO MUNICIPAL
ASSOCIATION**

**P.O. Box 10308
Thunder Bay, ON, P7B 6T8**

My work day may look different than yours. There is no expectation to read or respond to this email outside of your normal working hours. I am also honoured to live and work on the traditional territory of Fort William First Nation, signatory to the Robinson-Superior Treaty of 1850.

Thank you to our amazing 2025 Sponsors & Supporters!

Proudly supported by: [Northern Ontario Heritage Fund Corporation](#)

Diamond/Keynote: [Nuclear Waste Management Organization \(NWMO\)](#), [Hydro One](#), [Enbridge Gas Inc.](#)

Platinum/Speaker: [Intact Public Entities](#), [OPG](#), [IESO](#)

Lanyard Sponsor: [Ontario Forest Industries Association](#)

Gold: [LAS](#), [PH&N Institutional/One Investment](#)

Bronze/Entertainment: [TBT Engineering Ltd.](#), [Municipal World](#), [CLAC](#), [MPAC](#), [Chantelle Bryson | Potestio Law](#), [Quest Canada](#)

Refreshment: [Municipal Finance Officers' Association \(MFOA\)](#), [Munisoft](#)

This e-mail message and any files transmitted with it are intended only for the named recipient(s) above and may contain information that is privileged, confidential and/or exempt from disclosure under applicable law. If you are not the intended recipient(s), any dissemination, distribution or copying of this e-mail message or any files transmitted with it is strictly prohibited. If you have received this message in error, or are not the named recipient(s), please notify the sender immediately and delete this e-mail message.



2026 NOMA CONFERENCE & AGM

SAVE THE DATE

APRIL 22 TO APRIL 24, 2026
Valhalla Hotel & Conference Centre
Thunder Bay, ON

Hosted by Kenora District Municipal League



From: [Pamela Cain](#)
To: [Mayor Sheila Maxwell](#); [Conmee Clerk](#)
Subject: Request for support for CHRS initiative.
Date: September 10, 2025 4:09:54 PM
Attachments: [background.docx](#)
[LSLW CHRS DEVELOPMENT CONSULTATION SUPPORT MANAGEMENT.docx](#)
[CHRS LW-LS Nomination Document.pdf](#)
[2025 support.docx](#)
[2014 docs.pdf](#)
[LSLW Support letter template.docx](#)

Mayor Sheika Maxwell
 Conmee Township

We are seeking a letter of support for this initiative that proposes an extension of the 250-km long Boundary Waters Voyageur Waterway (BWVW) of the Canadian Heritage Rivers System (CHRS) to include the integrated waterway that extends 730-km from Lake Superior to Lake of the Woods (LSLW).

The BWVW–LSLW waterway has served as one of the primary transportation corridors connecting North America’s east and west for millennia. Its strategic location in the heart of the continent also serves as a gateway to the Arctic Ocean, to the Mississippi River, and to the Gulf of Mexico.

The LSLW’s cultural, natural and recreational values make it a worthy supplement to the BWVW CHRS designation. The LSLW tells a rich cultural story that extends from the mouth of the Kaministiquia, through Dog Lake, Lac Des Milles Lacs, Quetico Lakes, and Rainy Lake to Lake of the Woods. Indigenous habitation is richly documented in oral histories, cultural lore and archaeology.

Since the 17th century, post-contact history of the French, British and Canadian regimes is told in diaries, artworks and built heritage and provides abundant insight into the cultural, natural and recreational values of the LSLW. The story of the rivers continue with the people who inhabit, explore, recreate, and work along the route.

The Canadian Heritage Rivers System (CHRS) is Canada’s national program for recognizing, celebrating and conserving the natural, cultural and recreational values of 42 river designations across Canada. Established in 1984, the CHRS is a model of stewardship, cooperation, and participation. Together, Canada’s federal, provincial, and territorial governments work in conjunction with local communities and stewardship groups to give recognition to over 10,000 km of rivers across the nation. The CHRS works towards the long-term management of our rivers for the benefit and enjoyment of Canadians, now and into the future.

We appreciate your input and support as we continue to pursue the designation of the traditional water route from Lake Superior to Lake of the Woods as a Canadian Heritage River.

The proposal will be forwarded to the Canadian Heritage Rivers for review September 15th, and a letter of support from you will greatly assist in ensuring the successful approval of this initiative. (This can be forwarded at a later date*)

Feel free to contact me with questions.

Find attached related documents that outline the initiative further. The submission document is also attached.

Support letters represent stakeholders including municipalities, indigenous and metis nations, heritage and conservation organizations, tourism and others. We are currently updating information and appreciate your support.

Pamela Cain

807 629-5495

CANADIAN HERITAGE RIVERS INITIATIVE

LAKE SUPERIOR to LAKE OF THE WOODS WATERWAY supplement to Boundary Waters-Voyageur Waterway Canadian Heritage Rivers System designation.

PROCESS and Status.

Canadian Heritage Rivers System

The Canadian Heritage Rivers System (CHRS) was established in 1984 by the federal, provincial, and territorial governments for the purposes of recognizing outstanding rivers of Canada, promoting responsible management, and commemorating their significant heritage values for the long-term benefit and enjoyment of Canadians. To qualify for inclusion in the CHRS, a river or section of a river must be of outstanding significance in one or more areas, including cultural heritage, natural history or recreational values. As of 2024, forty-two rivers or river sections, encompassing over 11,000 kilometres, have been awarded a CHRS designation.

The Canadian Heritage Rivers Board (the Board), composed of federal, provincial, and territorial government representatives, is responsible for reviewing each nomination document, and for advising the Minister responsible for Parks Canada and Minister(s) of the nominating agency on the suitability of the nominated river for inclusion in the CHRS. Within three years of acceptance of a nomination by the Ministers, a stewardship plan must be submitted to the Board, at which time, the river, or section of river, shall be formally included in the CHRS.

The Board undertakes periodic reviews of CHRS designations to ensure that such rivers continue to merit inclusion in the CHRS. The authority of the Board to conduct these reviews is derived from the Ministers of the Crown of the participating governments. (Canadian Heritage Rivers System Principles, Procedures and Operational Guidelines, 2024).

Currently the CHRS nomination for the Lake Superior to Lake of the Woods LSLW adhesion to the Boundary Waters Voyageur Waterway BWVW is being submitted for final review and approval by the CHRS nominating committee. The designation process began in 2005, and has since followed the steps required by the CHRS Nomination Team:

How are rivers nominated and designated to the CHRS?

For a river to be nominated to the CHRS it must have a high level of public support and contain natural and/or cultural values of Canadian significance. In addition, it may also be recognized for outstanding recreational values. The CHRS seeks to include rivers that represent the full spectrum of Canada's rich river heritage. While additional outstanding rivers may be added to the system, a major focus of the CHRS today is on maintaining and strengthening river stewardship in ways that benefit all Canadians.

If an organization or individual wishes to begin the nomination process for a river they feel should be a part of the system, a step-by-step guide to the nomination and designation process is provided below. Members of the CHRS Team are available to provide support and guidance every step of the way.

Step 1 Inquiry: Contact your provincial or territorial Canadian Heritage Rivers Board member or member of the Technical Planning Committee (TPC). This first step may involve a discussion of whether your river's natural or cultural values make it a viable candidate for the CHRS, and whether your jurisdiction is supportive of moving your river forward in the CHRS process.

Step 2 Pre-screening: Your Board or TPC member will provide you with resources to help you understand CHRS policies and procedures and assess your river's natural and historic values. The Technical Planning Committee member will advise you whether or not a pre-screening report should be prepared to review your river's candidacy before time and effort is put into preparing a nomination.

Step 3 Background Study: If the pre-screening report is positive and the provincial or territorial government supports the river's nomination, you will be invited to apply for financial support to prepare a background study that will inventory your river's natural, cultural and recreational values.

Step 4 Nomination Document: Once the background study has been completed, a nomination document must be prepared and submitted to the Board for its consideration. Nomination documents build on the background document's inventory of values. They must make a persuasive argument for the river's exceptional values and

inclusion in the System. The document must also demonstrate a high amount of community support for the nomination.

Step 5 Review and Approval of the Nomination: If the river meets selection guidelines, the Board will recommend that the nomination be officially approved by the appropriate provincial or territorial Minister and the Minister responsible for Parks Canada (the Minister of Environment and Climate Change Canada). An announcement celebrating the nomination of the river will then be prepared by the federal and provincial governments, in cooperation with the community-level river proponent.

Step 6 Producing a Designation Document: A designation document (also known as a management plan or heritage strategy) must be prepared that describes how the river will be managed to conserve its outstanding natural, cultural and recreational values. Financial support is also available for this step, which requires public consultations. The CHRS program is non-legislative, which means that all conservation actions described in the designation document are voluntary. No new regulations or laws are created when rivers are designated to the CHRS.

Step 7 Review and Approval of the Designation: The designation document is reviewed by the Technical Planning Committee and tabled with the Board for its recommendation to the appropriate provincial or territorial Minister and the Minister of Environment and Climate Change Canada to formally designate the river to the CHRS. Once this approval has been obtained, a news announcement and plaque unveiling ceremony can take place.

In 2025, we have been asked to complete revisions and submit for a final technical review with the nomination document then prepared to be submitted to the Canadian Heritage Rivers Board in the fall of 2025.

It's been an arduous process that began in the spring of 2005 when a seed was planted at the ManOMin Watershed Conference sponsored by the Rainy River Watershed Program and Rainy River First Nations.

Through liaising with stakeholders along the LSLW Waterway, and reviewing relevant resources, a detailed framework, as outlined by the CHRS was prepared and has been reviewed by the technical committee a variety of times and revised to meet current standards, incorporate input from stakeholders and update research.

We have been advised that the CHRS review team feels that the nomination document is complete for submission to the board and that they anticipate approval will be forthcoming.

The designation process involves acceptance of this current document. If accepted the Designation Document would be drafted- a management plan or heritage strategy that describes how the river will be managed to conserve its outstanding natural, cultural and recreational values. Non-legislative, all conservation actions described in the designation document are voluntary and require public consultation. Through an annual report changes, improvements and threats to the values for which the river was designated are described. River-based events and stewardship actions are also listed in annual reports.

Consultation will continue with stakeholders and communities along the waterway. Accessing resources to ensure the designation meets CHRS standards and upholds the intent of recognizing the significance of the Lake Superior to Lake of the Woods Waterway.

Next Steps

Upon approval of the LSLW supplementary nomination by the Ontario Minister of the Environment, Conservation and Parks and the Minister responsible for Parks Canada, the LSLW Stewardship Group will work with the CHRS Advisor, and Ontario Parks representatives as required to support public relations initiatives conducted to nurture broad awareness of the approved LSLW nomination and the CHRS program; educate CHRS stakeholders about the benefits and obligations pertaining to participation in the CHRS program and the steps necessary to secure a CHRS designation for the LSLW; build a monitoring and reporting regime aligned to the expertise and mandate of Stewardship Group members; this process will serve as the foundation of the LSLW Stewardship Plan; and

submit to the CHRS Board for review, within three years of receiving approval of the LSLW nomination, the Stewardship Plan, which details the activities to manage the LSLW's values in accordance with CHRS objectives. If the CHRS Board determines that the LSLW Stewardship Plan fully meets CHRS objectives, it will recommend to the Ontario Minister of the Environment, Conservation and Parks and the Minister responsible for Parks Canada that the LSLW be officially designated as a supplement to the BWVW Canadian Heritage River.

The Lake Superior to Lake of the Woods Waterway CHRS nomination committee-

Peter Boyle, retired Fort William Historic Park
Pamela Cain (Hawley) retired curator Fort Frances Museum
Dale Callaghan, Rainy Lake Conservancy
Pyliss Callaghan, Rainy Lake Conservancy
Brian McLaren, Lakehead University



Northwestern Ontario Municipal Association

NOMA Applauds Federal Commitment to Nation-Building Projects, Renews Call for Urgent Action on Highway 11/17

Thunder Bay, ON – September 11, 2025 - The Northwestern Ontario Municipal Association (NOMA) applauds Prime Minister Mark Carney and the Government of Canada for the launch of the Major Projects Office (MPO) and today's announcement of the first wave of projects under review. These nation-building initiatives represent a bold step toward strengthening Canada's economy, enhancing energy security, and creating opportunities across the country.

While NOMA welcomes these investments, we continue to raise urgent concerns that Canada's national highway system—specifically the Trans-Canada Highway through Northwestern Ontario—must be recognized as a top national priority. Highway 11/17 is the critical east-west link connecting Central and Western Canada. It is the lifeline for Northern and Northwestern communities, the main corridor for the movement of goods and services, and an essential artery for national security and economic sovereignty.

Despite its importance, much of Highway 11/17 remains two lanes, plagued by safety challenges, frequent closures, and bottlenecks that jeopardize trade, community well-being, and supply chain resilience. NOMA calls on both the federal and provincial governments to work together to fast-track a comprehensive highway strategy—one that treats Highway 11/17 as our region's "400-series highway." This must include critical upgrades and modern solutions such as the proven 2+1 highway model to ensure the safe and reliable movement of people and goods across this country.

NOMA President Rick Dumas stated:

"Today's announcement by the Prime Minister demonstrates the federal government's commitment to transformative projects of national interest. Yet no project is more vital to Canada's future than ensuring that Highway 11/17 is safe, efficient, and reliable. This corridor is our lifeline to Western Canada—a true nation-building project that must be elevated as part of the country's economic and transportation vision."

NOMA Executive Vice-President Fred Mota added:

"The projects announced today—LNG, nuclear, mining, ports—will all depend on strong transportation corridors to succeed. Highway 11/17 is not just a Northwestern Ontario issue; it is a national issue. We urge both levels of government to treat Highway 11/17 as our region's 400-series highway and to fast-track the upgrades that will keep people safe, goods moving, and communities connected."

NOMA stands ready to work with the Government of Canada, the Province of Ontario, Indigenous partners, and stakeholders across the country to advance a national highway strategy. Canada's economic resilience depends on it.

Northwestern Ontario Municipal Association

**Media Contact:**

Jason Veltri

Executive Coordinator

Northwestern Ontario Municipal Association (NOMA)

admin@noma.on.ca | 807-683-6662



**THUNDER BAY DISTRICT HEALTH UNIT
BOARD OF HEALTH MEETING MINUTES**

DATE OF THE MEETING: June 18, 2025

TIME OF MEETING: 1:00 PM

PLACE OF MEETING: FIRST FLOOR BOARDROOM /
VIDEOCONFERENCE

CHAIR: MR. JAMES MCPHERSON

BOARD MEMBERS PRESENT:

Mr. Grant Arnold
Ms. Cindy Brand
Ms. Kasey Etreni
Mr. Paul Malashewski
Mr. James McPherson
Mr. Allan Mihalcin
Mr. Jim Moffat
Ms. Cynthia Olsen
Ms. Donna Peacock
Mr. Don Smith

REGRETS:

Ms. Lucy Belanger
Ms. Kristine Thompson
Mr. Todd Wheeler

ABSENT:

Dr. Mark Thibert

ADMINISTRATION PRESENT:

Dr. Janet DeMille, Medical Officer of Health and
Chief Executive Officer
Mr. Dan Hrychuk, Director – Corporate Services
Ms. Shannon Robinson, Director – Health
Promotion
Ms. Diana Gowanlock, Director of Health
Protection
Ms. Dana Wilson, Associate Director –
Communications & Strategic Initiatives
Ms. Kandace Belanger, Manager – Street
Outreach and Harm Reduction
Ms. Rosemary Scofich, Manager – Healthy
Babies/ Healthy Children
Ms. Shelley Oleksuk, Administrative Assistant–
Health Promotion

RECORDER:

Sunena Shetty, Executive Assistant and Secretary
to the Board of Health

1. CALL TO ORDER AND LAND ACKNOWLEDGEMENT

The Chair called the meeting to order at 1:04 PM.

2. ATTENDANCE AND ANNOUNCEMENTS

The Chair presented regrets from the above noted.

3. DECLARATIONS OF CONFLICT OF INTEREST

There were no declarations of conflict of interest.

4. AGENDA APPROVAL

The agenda was approved as presented.

Resolution No. 67-2025

Moved By: P. Malashewski

Seconded By: J. Moffat

THAT the Agenda for the Regular Board of Health Meeting to be held on June 18, 2025 be approved.

CARRIED

5. INFORMATION SESSION

5.1 The SPRITE Project: A Locally-Driven Collaborative Project

Ms. Diana Gowanlock (Director of Health Protection) introduced Ms. Kandace Belanger (Manager of Street Outreach and Harm Reduction) who provided a presentation on the "SPRITE" project and responded to questions and comments from the Board.

6. MINUTES OF THE PREVIOUS MEETINGS

6.1 Thunder Bay District Board of Health

The minutes of the Thunder Bay District Board of Health (Regular and Closed Session) Meeting held on May 21, 2025 were approved as presented.

Resolution No. 68-2025

Moved By: K. Etrene

Seconded By: P. Malashewski

THAT the Minutes of the Thunder Bay District Board of Health (Regular and Closed Session) meeting held on May 21, 2025 be approved.

CARRIED

6.2 Board of Health Ad Hoc Committee

The minutes of the Thunder Bay District Board of Health Ad Hoc Committee Meeting held on May 9, 2025 were approved as presented.

Resolution No. 69-2025

Moved By: P. Malashewski

Seconded By: J. Moffat

THAT the minutes of the Thunder Bay District Board of Health Ad Hoc Committee meeting held on May 9, 2025, be approved.

CARRIED

6.3 Board of Health Executive Committee

The minutes of the Thunder Bay District Board of Health Executive Committee Meeting held on April 16, 2025 were presented for information.

6.4 Board of Health Ad Hoc Committee

The minutes of the Thunder Bay District Board of Health Executive Committee Meeting held on May 2, 2025 were presented for information.

7. MATTERS ARISING FROM THE MINUTES

There were no matters arising from the previous minutes.

8. BOARD OF HEALTH (CLOSED SESSION) MEETING

Resolution No. 70a-2025

Moved By: K. Etreni

Seconded By: P. Malashewski

THAT the Board of Health move into closed session to receive information about a position or plan to be applied to negotiations carried on behalf of the Board.

CARRIED

At 1:27 PM, the Board of Health moved into Closed Session.

The following individuals left the meeting:

Ms. Rosemary Scofich, Manager of Healthy Babies/ Healthy Children.

Ms. Diana Carlson, Administrative Assistant- Corporate Services

Ms. Sunena Shetty, Executive Assistant and Secretary to the Board of Health

At 2:08 PM, the Board moved out of closed session and the above individuals returned to the meeting.

8.1. Closed Session Report

The Chair reported that the Board of Health received a confidential report from the CEO regarding matters of negotiations.

Resolution No. 70c-2025

Moved By: K. Etreni

Seconded By: G. Arnold

THAT the Board of Health in the spirit of reconciliation recognizes the sovereignty of the Sioux Lookout area First Nations over public health in their communities,

AND the Board recognizes the “Approaches to Community Wellbeing” as the model the communities have endorsed for their Public Health programs and services,

AND the Board wishes to support Sioux Lookout First Nations Health Authority (SLFNHA) with having the resources needed to advance the “Approaches to Community Wellbeing” and the delivery of public health programs and services,

THEREFORE, the Board directs Administration to engage with the Ontario Ministry of Health and Indigenous Services Canada (ISC) as appropriate, to transfer the public health physician position currently employed by TBDHU and seconded to SLFNHA, to be employed and managed solely by the Sioux Lookout First Nations Health Authority,

AND THAT a letter be sent to the Ontario Minister of Health and to the Chief Medical Officer of Health and Executive Lead for Public Health to advise them of the Board’s position on this.

AND THAT a letter be sent along with the resolution, to the leadership of the SLFNHA area MPPs, area MPs, NOMA, Northwestern Health Unit Board of Health and ISC.

CARRIED

9. DECISIONS OF THE BOARD**9.1 2024 Financial Statements**

Report No. 29–2025 (Finance) relative to presenting the Board of Health with the audited 2024 Financial Statements, was presented to the Board for approval.

Resolution No. 71-2025

Moved By: J. Moffat

Seconded By: P. Malashewski

THAT with respect to Report Number 29-2025 (Finance), we recommend the Financial Statements of the Thunder Bay District Health Unit for the year ending December 31, 2024, be approved as recommended by the Executive Committee.

CARRIED

9.2 Healthy Babies Healthy Children Budget

Report No. 31-2025 (HBHC) relative to approval of the program budget for April 1, 2025 to March 31, 2026 for the Healthy Babies Healthy Children program was presented to the Board for approval.

Resolution No. 72-2025

Moved By: J. Moffat

Seconded By: K. Etreni

THAT with respect to Report No. 31-2025 (Healthy Babies Healthy Children), we recommend that the Healthy Babies Healthy Children (HBHC) program budget for April 1, 2025 to March 31, 2026 be approved at \$1,384,643 for submission to the Ministry of Children, Community and Social Services;

AND THAT the base program staffing be set at 12.90 full-time equivalents for the HBHC program;

AND THAT the Director of Corporate Services and Manager of Finance be authorized to complete any administrative requirements of the budget submission process, as required.

CARRIED

9.3 Policy and Procedure Reviews

A memorandum from Dr. J. DeMille (MOH/CEO) dated June 18, 2025, and containing a resolution relative to approval of Board of Health policy and procedure updates was presented to the Board.

Resolution No. 73-2025

Moved By: K. Etreni

Seconded By: J. Moffat

THAT the proposed updates to the following Board of Health Policies and Procedures be approved:

- BH-02-23 Financial Responsibilities and Limitations Policy
- BH-02-24 Investments Policy
- BH-02-20 Code of Conduct Policy and Procedure

AND THAT Administration be authorized to finalize and publish the updated Board of Health policies and procedures.

CARRIED

10. COMMUNICATIONS FOR INFORMATION

10.1 2026 Budget Parameters

Report Number 30-2025 (Finance) relative to providing the Board of Health with information for the development of the 2026 budget parameters was presented, for information.

10.2 Provincial Advocacy

A memorandum from Dr. DeMille (MOH/CEO) dated June 18, 2025 relative to discussions on Provincial Advocacy was presented, for information.

10.3 Risk Management Report

Report Number 32-2025 (MOH/CEO) relative to providing the Board of Health with an update on Enterprise Risk Management, was presented, for information.

10.4 Medical Officer of Health/CEO update

Dr. DeMille noted that the alPHa AGM and conference started today,

11. NEXT MEETING

The next regular meeting is scheduled for Wednesday, September 17, 2025 at 1:00 PM.

12. ADJOURNMENT

Resolution No. 74-2025

Moved By: K. Etrene

Seconded By: P. Malashewski

THAT the Board of Health meeting held on June 18, 2025 be adjourned at
3:04 PM.

CARRIED



MINUTES OF BOARD (REGULAR SESSION) MEETING NO. 11/2025
OF

THE DISTRICT OF THUNDER BAY SOCIAL SERVICES ADMINISTRATION BOARD

DATE OF MEETING: June 19, 2025

TIME OF MEETING: 10:00 a.m.

LOCATION OF MEETING: Microsoft Teams &
3rd Floor Boardroom
TBDSSAB Headquarters
231 May Street South
Thunder Bay, ON

CHAIR: Brian Hamilton

PRESENT:

Albert Aiello
Anne Marie Bourgeault
Meghan Chomut
Chris Eby
Kasey Etreni
Brian Hamilton
Greg Johnson
Kathleen Lynch
Elaine Mannisto
Jim Moffat
Dominic Pasqualino
Jim Vezina

OFFICIALS:

Ken Ranta, Chief Executive Officer
Richard Jagielowicz, Director, Corporate Services Division
Crystal Simeoni, Director, Integrated Social Services Division
Dawnette Hoard, Manager, Child Care & Early Years Programs
Shari Mackenzie, Manager, Human Resources
Tafadzwa Mukubvu, Manager, Finance
Aaron Park, Manager, Housing & Homelessness Programs
Marty Read, Manager, Infrastructure & Asset Management
Tomi Akinyede, Supervisor, Research & Social Policy
Carole Lem, Communications & Engagement Officer
Bindiya Patel, Communications Assistant
Glenda Flank, Recording Secretary

REGRETS:

Ken Boshcoff
Mark Thibert

GUESTS:

Note: For the purposes of the Minutes references to TBDSSAB or the Board refers to The District of Thunder Bay Social Services Administration Board of Directors as relevant to specific agenda items; references to TBDHC or the Board refers to the Directors of Thunder Bay District Housing Corporation as relevant to specific agenda items. References to CEO refer jointly to the Chief Executive Officer of TBDSSAB and Senior Administrator of TBDHC.

BOARD MEETING

DISCLOSURES OF INTEREST

None

CONFIRMATION OF BOARD MEETING AGENDA

Resolution No. 25/42

Moved by: Greg Johnsen
Seconded by: Dominic Pasqualino

THAT with respect to the agendas for the Board Regular and Closed Session meetings of The District of Thunder Bay Social Services Administration Board for June 19, 2025, we approve the agendas as presented;

AND THAT we approve any additional information and new business.

CARRIED

MINUTES OF PREVIOUS MEETINGS

Board Meetings

Minutes of Meeting No. 09/2025 (Regular Session) and Meeting No. 10/2025 (Closed Session) of The District of Thunder Bay Social Services Administration Board, held on May 15, 2025, were presented for confirmation.

Resolution No. 25/43

Moved by: Kathleen Lynch
Seconded by: Meghan Chomut

THAT the Minutes of Meeting No. 09/2025 (Regular Session) and Meeting No. 10/2025 (Closed Session) of The District of Thunder Bay Social Services Administration Board, held on May 15, 2025, be confirmed.

CARRIED

At 10:07 a.m. Chris Eby, Board Member joined the meeting.

CLOSED SESSION MEETING

Administration recommended that the Board adjourn to a closed meeting relative to receipt of information with respect to the security of the property of the Corporation and relative to receipt of information with respect to litigation or potential litigation, including matters before administrative tribunals affecting the Corporation.

Resolution No. 25/44

Moved by: Jim Vezina
Seconded by: Jim Moffat

THAT the Board adjourns to Closed Session relative to receipt of information with respect to the security of the property of the Corporation regarding the Thunder Bay Police Services Initiative, the Bertrand Court Regeneration Strategy Update and the Homelessness Prevention Program Capital Projects and relative to receipt of information with respect to litigation or potential litigation, including matters before administrative tribunals affecting the Corporation regarding Legal Matter #01-2020 Update.

CARRIED

At 11:40 a.m. the meeting reconvened in Regular Session. Albert Aiello, Kasey Etrene, Brian Hamilton, Greg Johnsen and Dominic Pasqualino, Board Members, Aaron Park, Manager, Housing & Homelessness Programs and members of the public joined the meeting and Chris Eby, Board Member left the meeting.

Brian Hamilton resumed the position of Chair.

PRESENTATION

Homelessness Programs

A presentation was provided by Aaron Park, Manager, Housing and Homelessness Programs regarding the TBDSSAB homelessness prevention program.

Aaron provided detailed information regarding the homelessness prevention programs and responded to questions.

Ken Ranta, CEO provided clarification and responded to questions.

At 11:57 a.m. Greg Johnsen, Board Member left the meeting.

REPORTS OF ADMINISTRATION

Thunder Bay Police Service Initiative

Report No. 2025CS-04 (Integrated Social Services Division) was presented in Closed Session.

The following resolution was presented to the Board in Regular Session for consideration.

Resolution No. 25/45

Moved by: Kasey Etreni
Seconded by: Kathleen Lynch

THAT with respect to Report No. 2025CS-04 (Integrated Social Services Division), we The District of Thunder Bay Social Services Administration Board, direct that Administration proceed as directed in Closed Session.

CARRIED

Bertrand Court Regeneration Strategy
Update

Report No. 2025CS-05 (Integrated Social Services Division) was presented in Closed Session.

The following resolution was presented to the Board in Regular Session for consideration.

Resolution No. 25/46

Moved by: Anne-Marie Bourgeault
Seconded by: Albert Aiello

THAT with respect to Report No. 2025CS-05 (Integrated Social Services Division), we The District of Thunder Bay Social Services Administration Board, direct that Administration proceed as directed in Closed Session.

CARRIED

Homelessness Prevention Program
Capital Projects

Report No. 2025CS-06 (Integrated Social Services Division) was presented in Closed Session.

The following resolution was presented to the Board in Regular Session for consideration.

Resolution No. 25/47

Moved by: Kasey Etreni
Seconded by: Elaine Mannisto

THAT with respect to Report No. 2025CS-06 (Integrated Social Services Division) we, The District of Thunder Bay Social Services Administration Board direct Administration to proceed as directed in Closed Session.

CARRIED

Legal Matter #01-2020 Update

Report No. 2025CS-07 (Corporate Services Division) was presented in Closed Session.

The following resolution was presented to the Board in Regular Session for consideration.

Resolution No. 25/48

Moved by: Elaine Mannisto
Seconded by: Jim Moffat

THAT with respect to Report No. 2025CS-07 (Corporate Services Division), we, The District of Thunder Bay Social Services Administration Board, direct that Administration proceed as directed in Closed Session.

CARRIED

At 12:16 p.m. Brian Hamilton, Board Chair called for a break for lunch.

At 12:30 the meeting reconvened and Tafadzwa Mukubvu, Manager, Finance entered the meeting.

2026 Proposed Budget Schedule

Report No. 2025-20 (Corporate Services Division) was presented to the Board providing the proposed 2026 Budget Schedule.

Richard Jagielowicz, Director, Corporate Services Division provided a brief overview of the schedule.

Resolution No. 25/49

Moved by: Albert Aiello
Seconded by: Kasey Etreni

THAT with respect to Report No. 2025-20 (Corporate Services Division), we, The District of Thunder Bay Social Services Administration Board, approve the 2026 Budget Schedule as presented.

CARRIED

At 12:34 p.m. Tafadzwa Mukubvu, Manager, Finance left the meeting and Tomi Akinyede, Supervisor, Research & Social Policy joined the meeting.

Homelessness Prevention Program 2025-
26 Investment Plan

Report No. 2025-21 (Integrated Social Services Division) was presented to the Board providing information regarding the Ministry of Municipal Affairs Housing Homelessness Prevention Program and providing the recommended 2025-26 Investment Plan.

Aaron Park, Manager, Housing & Homelessness Programs responded to questions and provided further information.

Ken Ranta, CEO provided clarification and responded to questions.

Resolution No. 25/50

Moved by: Albert Aiello
Seconded by: Jim Moffat

THAT with respect to Report No. 2025-21 (Integrated Social Services Division), we The District of Thunder Bay Social Services Administration Board (the Board), approve the 2025-26 Homelessness Prevention Program Investment Plan (the Plan) as presented;

AND THAT the Board authorize the Chief Executive Officer to submit the Plan to the Ministry of Municipal Affairs and Housing;

AND THAT the Board authorize the Chief Executive Officer to execute any Agreements and other documents related thereto;

AND THAT any necessary By-law be presented to the Board for consideration.

CARRIED

At 12:52 p.m. Aaron Park, Manager, Housing & Homelessness Programs left the meeting and Dawnette Hoard, Manager, Child Care & Early Years joined the meeting.

2025 Association of Municipalities of
Ontario Position Papers

Report No. 2025-22 (Chief Executive Officer Division) was presented to the Board providing the recommended position papers for the 2025 Association of Municipalities of Ontario Annual Conference.

Ken Ranta, CEO provided an overview of the report, provided a brief introduction to the recommended position papers and responded to questions.

Resolution No. 25/51

Moved by: Kasey Etreni
Seconded by: Kathleen Lynch

THAT with respect to Report No. 2025-22 (Chief Executive Officer Division) we, The District of Thunder Bay Social Services Administration Board (the Board) receive the 2025 Association of Municipalities of Ontario (AMO) Position Papers as presented;

AND THAT we direct the Chief Executive Officer (CEO) to incorporate any edits to the position papers recommended by the Board by consensus into a final delegation package;

AND THAT we direct the CEO to send the final delegation packages to the appropriate provincial Ministries;

AND THAT a copy of the approved delegation briefings package be sent to Thunder Bay District municipal councils for endorsement;

AND THAT the CEO attend the 2025 AMO Annual Conference to provide support to the Board Chair and other Board members in their meetings with provincial officials regarding these issues.

CARRIED

At 1:04 p.m. Tomi Akinyede, Supervisor, Research & Social Policy left the meeting.

Child Care Direct Growth Plan Update

Report No. 2025-23 (Integrated Social Services Division) was presented to the Board providing information on the recalibration of direct growth plan spaces under the Canada Wide Early Learning Child Care system.

Dawnette Hoard, Manager, Child Care & Early Years responded to questions.

At 1:08 p.m. Dawnette Hoard, Manager, Child Care & Early Years left the meeting.

Cancellation of July Board Meeting

Memorandum from Ken Ranta, CEO dated May 23, 2025 was presented providing Administration's recommendation to cancel the TBDSSAB July Board meeting.

Ken Ranta, CEO provided a brief background regarding information on the Administrations recommendation.

Resolution No. 25/52

Moved by: Dominic Pasqualino
Seconded by: Elaine Mannisto

THAT with respect to the Memorandum dated May 23, 2025 from Ken Ranta, Chief Executive Officer, we approve the cancellation of the July Board Meeting scheduled for Thursday July 17, 2025;

AND THAT notice of the cancellation be posted on The District of Thunder Bay Social Services Administration Board website.

CARRIED

Signing Authority for Summer Months

Memorandum from Ken Ranta, CEO dated June 6, 2025 was presented to the Board requesting the Board's approval for signing authority during the summer months.

Ken Ranta, CEO provided a brief overview of the memorandum.

Resolution No. 25/53

Moved by: Meghan Chomut
Seconded by: Albert Aiello

THAT with respect to the recommendation of Administration relative to any urgent items that require Board approval for the months of July, August and

the beginning of September, we authorize the Chief Executive Officer and the Chair, or Vice Chair in the absence of the Chair, to sign any required documents with respect to items included in the approved 2025 Budget that exceed \$450,000;

AND THAT we authorize the Board Chair and Vice-Chair to review and approve for signing any urgent items outside of the approved 2025 Budget that are time sensitive;

AND THAT a Report be presented to the Board at the September Board meeting outlining any such items for the Board's information.

CARRIED

CORRESPONDENCE

None

BY-LAWS

None

NEW BUSINESS

On consensus, Administration to provide an update on communications regarding advocacy and an update on vacancies within the TBDSSAB housing properties.

Communications Strategy Update

Crystal Simeoni, Director, Integrated Social Services Division provided a brief overview of the steps Administration has taken regarding providing support services for tenants.

Ken Ranta, CEO provided a brief update on the identification of appropriate media communications and the strategy involved, including the strategy regarding the Community Policing Pilot and Administration's plan to work with TBPS.

TBDSSAB Housing Unit Vacancies

Ken Ranta, CEO provided a brief overview of the vacancies in TBDSSAB owned housing properties, provided information on the reasons for vacancies in units, processes followed to fill vacancies and responded to questions.

Crystal Simeoni, Director, Integrated Social Services provided further information and responded to questions.

On consensus, Administration to provide a copy of the update regarding vacancies to the Board.

A discussion was held regarding the possibility of requiring the Board's approval for next steps following the Situation Analysis Review Committee's meeting being held today.

NEXT MEETING

The next meeting of The District of Thunder Bay Social Services Administration Board was confirmed to be held on Thursday, September 18, 2025 at 10:00 a.m., in the 3rd Floor Boardroom, TBDSSAB Headquarters, 231 May Street South, Thunder Bay, Ontario and via Microsoft Teams.

ADJOURNMENT

Resolution No. 25/54

Moved by: Chris Eby
Seconded by: Dominic Pasqualino

THAT the Board Meeting No. 11/2025 of The District of Thunder Bay Social Services Administration Board, held on June 19, 2025, be adjourned at 1:38 p.m.

CARRIED



Chair



Chief Executive Officer

FONOM and NOMA Call for Immediate Federal Support to Protect Northern Ontario's Forestry Sector and Canada's Housing Targets

September 19, 2025 - The Federation of Northern Ontario Municipalities (FONOM) and the Northwestern Ontario Municipal Association (NOMA) are urgently calling on the Government of Canada to take immediate action to safeguard Northern Ontario's forestry sector. Without intervention, the organizations warn that Canada's national housing strategy will be derailed.

In a joint letter to Prime Minister Mark Carney and Minister of Housing and Infrastructure Gregor Robertson, FONOM and NOMA stressed that Canada's commitment to double housing construction under the *Build Canada Homes* initiative depends on a stable and competitive supply of Canadian lumber.

"At the heart of Canada's housing plan is wood, and that wood comes from Northern Ontario," said **Danny Whalen, President of FONOM**. *"The Kapuskasing Paper facility is the linchpin in an integrated system that keeps sawmills across the region operating. If Ottawa doesn't step in now, those sawmills will close, jobs will vanish, and the very foundation of the housing plan will crumble."*

The immediate concern is the pending closure of **Kapuskasing Paper within two weeks**. The facility provides critical markets for chips and bark; without it, sawmills in Kapuskasing, Hearst, Chapleau, and Cochrane will face cascading shutdowns.

"This is bigger than one mill—it's about safeguarding a national supply chain," said **Rick Dumas, President of NOMA**. *"Once this capacity is lost, it cannot be rebuilt quickly—if at all. Canada cannot meet its housing promise without a strong forestry sector in Ontario's North. The time to act is right now."*

FONOM and NOMA are calling on Ottawa to:

- Direct funding from the *Build Canada Homes* agency to stabilize facilities like Kapuskasing Paper.
- Address punitive U.S. duties and tariffs undermining Canadian producers.
- Recognize Ontario's forestry sector as a **critical enabler** of Canada's housing strategy.

Ontario has already taken steps to support the industry, but federal intervention is now essential.

"We are ready to work with the Government of Canada on solutions," added Whalen. *"But the clock is ticking—we are talking about days, not months."*

Media Contacts:

Danny Whalen, President, FONOM

705-622-2479 | fonom.info@gmail.com

Rick Dumas, President, NOMA

807-683-6662 | admin@noma.on.ca

**The Corporation of the Township of Conmee
Administrative Report**

Date: September 23, 2025

To: Mayor and Council

Subject: Criterion Movie Licence Options

File Number: 01-C10-0000 Administrative Activity Reports

Submitted by: Karen Paisley Clerk

RECOMMENDATION:

Given the modest cost difference and the increased flexibility and convenience of streaming, Council may wish to consider subscribing to Option 2 to enhance community programming and reduce logistical barriers. However, both options are viable and provide access to a broad selection of films suitable for indoor public screenings.

BACKGROUND:

Conmee Township has previously used Criterion Pictures for movie licensing to support community programming. Following a recent meeting with their representative, two licensing options are available for indoor movie screenings beginning October 1, 2025. These options differ in cost, access method, and flexibility, and Council is asked to consider which option best supports the Township's programming goals.

Option 1 – Home Release License

The Home Release License is available at a cost of \$660.00 plus applicable taxes annually. This license allows the Township to show movies indoors using DVDs or digital downloads. DVDs may be borrowed from Criterion Pictures' inventory, subject to availability, or purchased from retailers such as Amazon, Walmart, or Best Buy. Digital downloads are permitted only through Apple iTunes, which redirects to Apple TV. This option provides access to a wide range of titles from major studios represented by Criterion Pictures, including Warner Brothers, Paramount, Sony Pictures Classics, and others. However, it does not include access to Criterion's streaming platform, Criterion-on-Demand. While this option is more affordable, it requires physical media or specific digital downloads, which may limit flexibility and increase logistical effort for staff and volunteers.

Option 2 – Home Release License with Criterion-on-Demand

The second option includes all the benefits of the Home Release License, with the added feature of access to Criterion-on-Demand, at a cost of \$760.00 plus applicable taxes annually. Criterion-on-Demand is a streaming platform that provides instant access to over 7,300 titles, with quarterly updates to the catalogue. This option allows staff to stream movies directly using the Township's public IP address, eliminating the need to purchase or ship physical media. It offers greater flexibility for last-minute programming and simplifies logistics, especially for

volunteers and event organizers. While the cost is slightly higher, the convenience and expanded access may justify the additional expense. This option does not include outdoor screenings or certain titles such as *Star Wars* and *Rocky Horror Picture Show*, which require separate approvals and fees.

For the month of September, Criterion has a promotional offer. They are offering a signing bonus of another month at no additional cost, so instead of being licensed for 12 months, we will be licensed for 13 months. The offer expires September 30th.

**The Corporation of the Township of Conmee
Administrative Report**

Date: September 23, 2025

To: Mayor and Council

Subject: Structural Inspection – Two Bridges and One Culvert

File Number: 01-C10-0000 Administrative Activity Reports

Submitted by: Karen Paisley Clerk

RECOMMENDATION:

That Council receive the 2025 Structural Inspection Report prepared by JML Engineering for information, and direct staff to proceed with the proposed work plan and timeline for repairs to the Enders Road Bridge, Ilkka Drive Culvert, and Pokki Road Bridge.

BACKGROUND:

JML Engineering was retained to conduct structural inspections of municipal bridges and culverts in accordance with the Ontario Structural Inspection Manual (OSIM). The 2025 inspection included the Enders Road Bridge, Ilkka Drive Culvert, and Pokki Road Bridge, all located at Brule Creek. Each structure was assessed for physical condition, safety, and remaining service life. Recommendations for remedial repairs were provided, along with estimated costs and timelines.

The inspection report highlights several **key safety concerns** that Council may wish to consider addressing within the next two years:

- Rotting and damaged timber planks on bridge decks, which may pose a hazard to vehicle traffic.
- Deteriorated or missing guide rail posts and hardware, reducing roadside protection.
- Erosion at embankments and exposed geotextile, which could compromise structural stability.
- Cracking in the Ilkka Drive Culvert barrel, suggesting potential overstress or settlement.
- Abutment movement and settlement at Enders Road and Pokki Road Bridges, which are currently being monitored.

It is suggested that Council consider a phased approach to repairs, with routine maintenance tasks potentially completed by Public Works and more complex or safety-sensitive work undertaken by qualified third-party contractors. A proposed work plan and timeline are included below to assist with planning and budgeting.

SUMMARY OF RECOMMENDED REPAIRS:**Enders Road Bridge**

- Replace 11 wearing surface planks and remove gravel
- Extend curbs full length
- Lower steel guide rail
- Replace 5 guide rail posts and replumb 2 offset timbers
- Provide rock protection at southeast and southwest corners
- Remove tree downstream
- Replace 4 sections of steel guide rail
- Regrade shoulders and remove vegetation
- Tighten guide rail bolts
- Monitor split timbers at abutments

Ikka Drive Culvert

- Replace 17 guide rail posts
- Remove trees above culvert outlet
- Provide rock protection at southeast embankment
- Patch scaled concrete at downstream headwall

Pokki Road Bridge

- Replace 22 wearing surface planks and remove gravel
- Reinstall guide rail sections correctly
- Replace damaged guide rail sections
- Replace all post-to-guide rail bolts
- Provide fill at both abutments
- Regrade shoulders
- Remove tree at east abutment

RECOMMENDED WORK PLAN SPLIT**Public Works Tasks**

- Remove gravel and vegetation
- Regrade shoulders
- Remove small trees or debris
- Tighten bolts
- Monitor abutment movement

Third-Party Contractor Tasks

- Replace structural timber elements (planks, curbs)
- Guide rail system reinstallation
- Concrete patching
- Rock protection installation
- Fill placement at abutments

ESTIMATED CONSTRUCTION COSTS (from JML Engineering):

- **Enders Road Bridge:** \$38,000 + HST
- **Ikka Drive Culvert:** \$16,000 + HST
- **Pokki Road Bridge:** \$21,500 + HST
- **Total Estimated Cost:** \$75,500 + HST

SUGGESTED TIMELINE FOR COMPLETION:

- **Fall 2025:** Planning and procurement
- **Late 2025 to Early 2026:** Public Works prep work (vegetation removal, gravel clearing)
- **Spring–Summer 2026:** Contractor mobilization and construction
- **Fall 2026:** Final inspections and monitoring

These inspections and recommendations are intended to support the safe and sustainable operation of Conmee’s bridge and culvert infrastructure. Council may wish to consider incorporating these repairs into the 2026 budget and capital planning discussions. Staff will be available to assist with next steps, including obtaining quotes and coordinating work as directed.

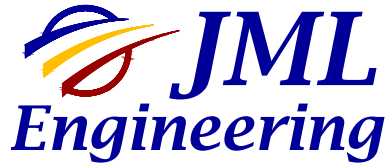
A follow-up meeting with JML Engineering is tentatively scheduled for Wednesday, September 24, 2025, to review the inspection findings in detail. The Public Works Manager will be invited to attend, pending availability.



Structural Inspection Two Bridges and One Culvert

FOR
CONMEE TOWNSHIP





105 Villa Street, 2nd Floor
Thunder Bay, ON P7A7W5
Phone: 807.345.1131
Fax: 807.345.1229
Email: info@jmleng.com

September 19, 2025
Ref. No. JML2024001

Conmee Township
19 Holland Road W.
Kakabeka Falls, ON P0T 1W0

Attention: Karen Paisley
Municipal Clerk

Reference: **Structural Inspection Two Bridges And One Culvert**

Dear Karen:

JML Engineering has been retained by Conmee Township to conduct a structural inspection of five bridges and one circular culvert located in Conmee Township over a two calendar year period. Contained within this report is the 2025 structural inspection of two bridges and one circular culvert. A location map indicating the location of all three structures is provided.

The purpose of this exercise was to complete a structural inspection in accordance with the Ontario Structural Inspection Manual (OSIM) of each structure, and to provide recommendations for remedial repair, where required at each of the three structures.

The three structures considered in this report are as follows:

1. Enders Road Bridge over Brule Creek
2. Ilkka Drive Culvert at Brule Creek
3. Pokki Road Bridge over Brule Creek

On August 14, 2025, Andrew Olesen, P.Eng. from JML Engineering, completed a site inspection of the three structures. The inspection was performed, and the data was recorded as per the requirements of the Ministry of Transportation's 'Ontario Structural Inspection Manual'. Photographs of the general arrangement of each structure, each typical element, and all significant findings were taken. The physical and functional condition of all elements were assessed and recorded.

This report is divided into three sections; one for each structure. A brief physical description of each structure is provided. The significant findings observed during the field investigation are identified. Recommendations for remedial repairs are provided, along with estimated construction costs. The Bridge Condition Index is also provided. OSIM data sheets and photographs complete the balance of each bridge report.

A summary of the estimated costs to implement the recommended remedial repairs for each structure is as follows:

<u>Structure Name</u>	<u>Estimated Remedial Repair Cost</u>
Enders Road Bridge over Brule Creek	\$ 38,000.00
Ilkka Drive Culvert at Brule Creek	\$ 16,000.00
Pokki Road Bridge over Brule Creek	\$ 21,500.00
Total Construction Cost Estimate	<u>\$ 75,500.00 + HST</u>

We recommend the next inspection of all three structures be completed in 2027.

The Enders Road Bridge appears to be reaching the end of its useful life based upon the observed movement and settlement of the abutments, advancing deterioration of the various timber elements, and reduced load carrying capacity of the deck. The bridge has an estimated remaining design life of approximately 5+ years. A Pre-Design Report should be done to determine the most feasible replacement solution for this crossing.

Cracking at the Ilkka Drive Culvert barrel indicates settlement or overstress has occurred. The estimated remaining life of this structure is 10-15 years based upon this deficiency. A Pre-Design Report should be done to determine the most feasible replacement or rehabilitation solution for this crossing.

Even though the structural inspection was carefully done, we do not claim that the observations made represent all of the faults or imperfections which may exist.

We trust this report is satisfactory. Please contact the undersigned if you require any additional information or clarification.

Best regards,

JML Engineering Ltd.



Andrew Olesen, P.Eng.
Project Engineer

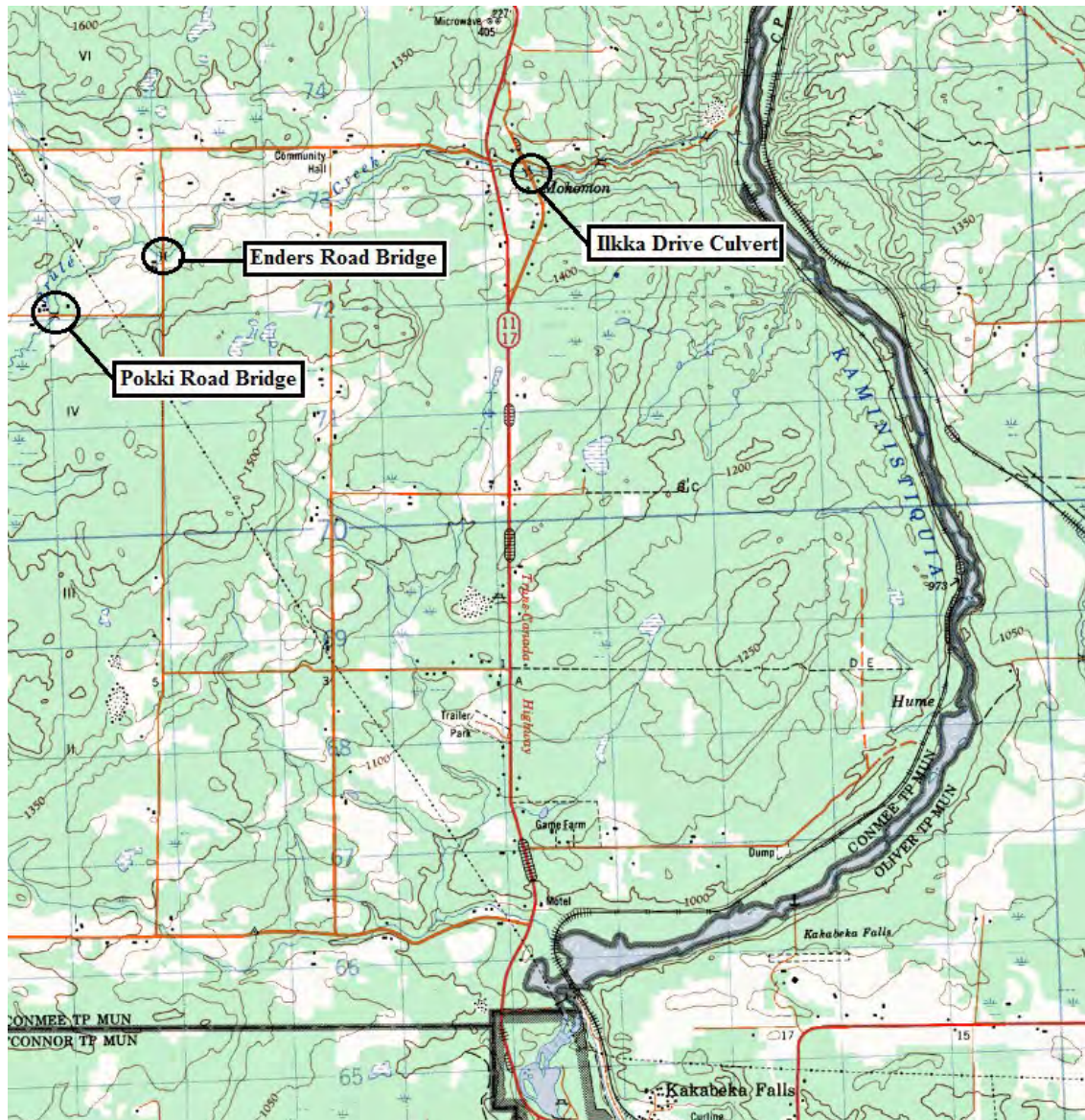


Michael Edmonds, P.Eng.
Vice-President

:ao
Encl.

P:\2024001 - Township of Conmee - Bi-annual Inspection Five Bridges One Culvert\Admin\Reports\2025\2 - 2025-08-19 Karen Paisley.doc

JML ENGINEERING LTD.



Location Map

Enders Road Bridge, Ilka Drive Culvert, Pokki Road Bridge



Structural Inspection Enders Road Bridge over Brule Creek

FOR
CONMEE TOWNSHIP



Ref. No. JML2024001

September 2025

ENDERS ROAD BRIDGE OVER BRULE CREEK

1.0 Description

The Enders Road Bridge is located approximately 4 km west of Highway 11/17 on Enders Road, accessed by Mokomon Road. The structure crosses Brule Creek. The structure is currently load posted at 15/25/34 tonnes.

The structure is a single lane, single span bridge consisting of a longitudinal nail laminated timber deck supported on closed cell timber cribs. The overall length of the bridge is approximately 6.1 m, and the width is 6.2 m.

The superstructure includes a timber wear surface, a timber deck, steel railing, and timber curbs. The wear surface consists of 50 mm x 180 mm longitudinal untreated timbers which extend across the entire deck width. The longitudinal nail laminated deck consists of 76 mm x 290 mm creosote treated sawn timbers. The railing system consists of a galvanized steel beam guide rail supported by CCA treated timber posts. The curbs consist of 190 mm x 190 mm sawn CCA treated timbers on 190 mm x 190 mm x 900 mm long timber spacers at 2.16 m centres.

The abutments are closed cell timber cribs consisting of 150 mm x 190 mm CCA treated timbers.

Hazard Marker signs are located at the four corners of the bridge. Narrow Bridge warning signs and load limit signs are located approximately 150 metres and 50 metres, respectively, from the bridge approaches.

The embankments are vegetated with grasses and trees and contain rock protection. At the time of the field investigation, the width of the stream was estimated at 4800 mm, the water depth near midspan was approximately 370 mm, and a vertical clearance of approximately 2200 mm was measured from the underside of the bridge to the water surface.

2.0 Significant Findings

Severe rot was observed at eleven wearing surface planks. Gravel has accumulated at the sides of the wearing surface.

Gravel has accumulated throughout the bridge deck, filling in the rotted timbers in some areas.

Severe abrasion and broken planks were observed at the northwest corner of the wearing surface.

The curbs do not extend along the full length of the deck and cribs.

The steel flex beam guide rail is mounted approximately 200 mm too high along the deck and at the approaches. One bolt connecting the posts to the guide rail is loose.

Five guide rail posts contain medium to severe end rot. The offset timbers at the bridge are not of a standard size and two offset blocks have rotated.

Both abutment walls have outward horizontal displacement mid-height of the wall. Timbers at each corner of the abutments are also severely split.

The abutments have settled at the centre.

Erosion is occurring at the southeast and southwest embankments exposing the geotextile. All embankments are steep.

Vegetation growth at the shoulders of both approaches impedes drainage.

3.0 Monitoring

Due to the apparent outward horizontal displacement and settlement of the north and south abutments, two monitoring systems were established at the Enders Road Bridge in 2019 with follow up measurements taken during the follow-up inspections. One system is to record changes in visible horizontal displacement mid-height of abutment walls and one system is to record changes in settlement at the centre of each abutment.

Measurements were taken to record the clear span lengths at the top, midpoint, and bottom of the abutments at both the east and west sides. Each measurement was marked on the structure with matching numbers on each abutment. The span lengths recorded are summarized in the table below.

West (Upstream) Side Horizontal Displacement Monitoring	
Measurement 1-1 (Top)	
Date	Measurement
June 18, 2019	4.756 m
May 13, 2021	4.743 m
October 6, 2023	4.729 m
August 14, 2025	4.745 m
Measurement 2-2 (Middle)	
June 18, 2019	4.687 m
May 13, 2021	4.681 m
October 6, 2023	4.684 m
August 14, 2025	4.674 m
Measurement 3-3 (Bottom)	
June 18, 2019	4.748 m
May 13, 2021	4.709 m
October 6, 2023	4.684 m
August 14, 2025	4.641 m

East (Downstream) Side Horizontal Displacement Monitoring	
Measurement 4-4 (Top)	
Date	Measurement
June 18, 2019	4.749 m
May 13, 2021	4.740 m
October 6, 2023	4.732 m
August 14, 2025	4.766 m
Measurement 5-5 (Middle)	

June 18, 2019	4.703 m
May 13, 2021	4.702 m
October 6, 2023	4.707 m
August 14, 2025	4.702 m
Measurement 6-6 (Bottom)	
June 18, 2019	4.762 m
May 13, 2021	4.762 m
October 6, 2023	4.723 m
August 14, 2025	4.719 m

To record changes in settlement of the centre of each abutment, horizontal measurements were taken near the centre of the abutment at a suitable location using a 'Smart' level which indicates slope in degrees. The selected locations measured the slope of a horizontal crib member near the centre of the abutment. The location of each measurement was marked on the structure. The angle of inclination of the abutment timbers are summarized below.

North Abutment Settlement Monitoring	
Date	Measurement
June 18, 2019	0.2°
May 13, 2021	0.55°
October 6, 2023	0.61°
August 14, 2025	0.55°

South Abutment Settlement Monitoring	
Date	Measurement
June 18, 2019	0.9°
May 13, 2021	1.6°
October 6, 2023	1.5°
August 14, 2025	0.95°

The measurements taken during the 2025 inspection generally show a progression in readings between the clear span at the top, middle and bottom of the abutments at the east and west sides compared to the previous inspection. In addition, it appears the abutment settlement is advancing. These readings should continue to be taken in future inspections. If the readings drastically increase, a more restrictive load posting or bridge closure may be required.

4.0 Conclusions and Recommendations

The bridge appears to be reaching the end of its useful life based upon the observed movement and settlement of the abutments, advancing deterioration of the various timber elements, and reduced load carrying capacity of the deck. The bridge has an estimated remaining design life of approximately 5+ years. A Pre-Design Report should be done to determine the most feasible replacement solution for this crossing.

The following remedial repairs are recommended within the next 2 years.

- Replace eleven wearing surface planks. Remove gravel from the wearing surface.
- Extend the curb full length of the bridge at both sides.

- Lower the steel flex beam guide rail to the proper height.
- Replace five guide rail posts and all offsets at bridge. Replumb 2 offset timbers.
- Provide rock protection at the southeast and southwest corners.
- Remove tree downstream of crossing.
- Replace four sections of steel flex beam guide rail.
- Remove vegetation and regrade the shoulders at both approaches to improve drainage.
- Tighten guide rail bolts.
- Monitor progression of severely split timbers at the abutment.

5.0 Estimated Construction Costs

The following are the estimated construction costs for the recommended remedial repairs:

Replace eleven wearing surface planks and remove gravel	\$ 2,000.00
Extend the curb full length of deck and cribs	\$ 5,500.00
Lower the steel flex beam guide rail system	\$ 4,000.00
Replace five rotten guide rail posts	\$ 3,500.00
Provide 10 standard size offset timbers	\$ 2,500.00
Provide rock protection at southeast and southwest corner	\$ 5,000.00
Remove fallen tree downstream of crossing	\$ 500.00
Remove vegetation and regrade shoulders	\$ 2,500.00
Tighten loose bolts	\$ 500.00
Subtotal	\$ 26,000.00
Mob/Demob (15%)	\$ 4,000.00
Engineering and Contingency (30%)	\$ 8,000.00
Total Construction Cost Estimate	<u>\$ 38,000.00 + HST</u>

The Bridge Condition Index (BCI) is the ratio of the value of each bridge element in its current state to the total replacement value of the bridge. The overall BCI of the Enders Road Bridge is 57. This BCI value implies that the bridge is in fair condition. However, given the condition of the bridge abutments, low load carrying capacity, and advancing deterioration, the bridge has an estimated remaining design life of 5+ years.

6.0 Closing

Even though the structural inspection was carefully done, we do not claim that the observations made represent all of the faults or imperfections which may exist.

We trust this report is satisfactory. Please contact the undersigned if you require any additional information or clarification.

Best regards,

JML Engineering Ltd.



Andrew Olesen, P.Eng.
Project Engineer



Michael Edmonds, P.Eng.
Vice-President

:ao

Encl.

P:\2024001 - Township of Conmee - Bi-annual Inspection Five Bridges One Culvert\Admin\Reports\2025\Enders Road Bridge\2 - Summary.doc

Inventory Data:			
Structure Name	Enders Road Bridge over Brule Creek		
Main Hwy/Road #	<input type="text"/>	On <input type="checkbox"/> Under <input type="checkbox"/>	Crossing Type: <input type="checkbox"/> Navig. Water <input checked="" type="checkbox"/> Non-Navig. Water <input type="checkbox"/> Rail <input type="checkbox"/> Road <input type="checkbox"/> Ped. <input type="checkbox"/> Other
Hwy/Road Name	Enders Road		
Structure Location	4.0 km West of Hwy 11/17		
Latitude	48° 28' 35 N	Longitude	89° 40' 43 W
Owner(s)	Conmee Township	Heritage Designation:	<input type="checkbox"/> Not Cons. <input type="checkbox"/> Cons./not App. <input type="checkbox"/> List/not Desig. <input type="checkbox"/> Desig./not List <input type="checkbox"/> Desig. & List
MTO Region	Northwestern	Road Class:	Freeway <input type="checkbox"/> Arterial <input type="checkbox"/> Collector <input checked="" type="checkbox"/> Local <input type="checkbox"/>
MTO District	Thunder Bay	Posted Speed	60 km/hr No. of Lanes 1
Old County	Thunder Bay	AADT	% Trucks
Geographic Twp.	473	Inspection Route Sequence	
Structure Type	Longitudinally Laminated Timber Deck	Interchange Number	
Total Deck Length	6.08 (m)	Interchange Structure Number	
Overall Str. Width	6.15 (m)	Min. Vertical Clearance	2.5 (m)
Total Deck Area	37.39 (sq.m)	Special Routes:	<input type="checkbox"/> Transit <input type="checkbox"/> Truck <input type="checkbox"/> School <input type="checkbox"/> Bicycle
Roadway Width	6.75 (m)	Detour Length Around Bridge	13.1 (km)
Skew Angle	0 (Degrees)	Direction of Structure	North/South
No. of Spans	1	Fill on Structure	(m)
Span Lengths	5.0 (m)		

Historical Data:			
Year Built	<input type="text"/>	Year of Last Major Rehab.	<input type="text"/>
Last OSIM Inspection	2023	Last Evaluation	2010
Last Enhanced OSIM Inspection	<input type="text"/>	Current Load Limit	15/25/34 (tonnes)
Enhanced Access Equipment (ladder, boat, lift, etc.)	<input type="text"/>	Load Limit By-Law #	<input type="text"/>
Last Underwater Inspection	<input type="text"/>	By-Law Expiry Date	<input type="text"/>
Last Condition Survey	<input type="text"/>		

Rehab History: 2016 – Replaced 8 posts. Replaced 2 sections of steel guide rails. Removed geotextile from stream. Placed rock protection at all embankments.

Field Inspection Information:			
Date of Inspection:	August 14, 2025	Type of Inspection:	<input checked="" type="checkbox"/> OSIM <input type="checkbox"/> Enhanced OSIM
Inspector:	Andrew Olesen, P.Eng., JML Engineering		
Others in Party:			
Access Equipment Used:	Chest Waders		
Weather:	Sunny		
Temperature:	19° C		

Additional Investigations Required:		Priority		
		None	Normal	Urgent
Material Condition Survey				
	Detailed Deck Condition Survey:	<input checked="" type="checkbox"/>	<input type="checkbox"/>	<input type="checkbox"/>
	Non-destructive Delamination Survey of Asphalt-Covered Deck:	<input checked="" type="checkbox"/>	<input type="checkbox"/>	<input type="checkbox"/>
	Concrete Substructure Condition Survey:	<input checked="" type="checkbox"/>	<input type="checkbox"/>	<input type="checkbox"/>
	Detailed Coating Condition Survey:	<input checked="" type="checkbox"/>	<input type="checkbox"/>	<input type="checkbox"/>
	Detailed Timber Investigation	<input checked="" type="checkbox"/>	<input type="checkbox"/>	<input type="checkbox"/>
	Post-Tensioned Strand Investigation	<input checked="" type="checkbox"/>	<input type="checkbox"/>	<input type="checkbox"/>
Underwater Investigation:		<input checked="" type="checkbox"/>	<input type="checkbox"/>	<input type="checkbox"/>
Fatigue Investigation:		<input checked="" type="checkbox"/>	<input type="checkbox"/>	<input type="checkbox"/>
Seismic Investigation:		<input checked="" type="checkbox"/>	<input type="checkbox"/>	<input type="checkbox"/>
Structure Evaluation:		<input checked="" type="checkbox"/>	<input type="checkbox"/>	<input type="checkbox"/>
Monitoring				
	Monitoring of Deformations, Settlements and Movements:	<input type="checkbox"/>	<input checked="" type="checkbox"/>	<input type="checkbox"/>
	Monitoring Crack Widths:	<input checked="" type="checkbox"/>	<input type="checkbox"/>	<input type="checkbox"/>
Investigation Notes:				
Monitor the horizontal displacement and settlement of the north and south abutment.				

Overall Structure Notes:			
Recommended Work on Structure:	<input type="checkbox"/> None <input checked="" type="checkbox"/> Minor Rehab. <input type="checkbox"/> Major Rehab. <input checked="" type="checkbox"/> Replace		
Timing of Recommended Work:	<input type="checkbox"/> 1 to 5 years <input checked="" type="checkbox"/> 6 to 10 years		
Overall Comments:	Miscellaneous repairs within next two years. Replace structure within 5-10 years.		
Date of Next Inspection:	2027		

Suspected Performance Deficiencies

- | | | |
|--|---|-------------------------------------|
| 01 Load carrying capacity | 06 Bearing not uniformly loaded/unstable | 12 Slippery surfaces |
| 02 Excessive deformations (deflections & rotations) | 07 Jammed expansion joint | 13 Flooding/channel blockage |
| 03 Continuing settlement | 08 Pedestrian/vehicular hazard | 14 Undermining of foundation |
| 04 Continuing movements | 09 Rough riding surface | 15 Unstable embankments |
| 05 Seized bearings | 10 Surface ponding | 16 Other |
| | 11 Deck drainage | |

Maintenance Needs

- | | | |
|---|--|---|
| 01 Lift and Swing Bridge Maintenance | 07 Repair to Structural Steel | 13 Erosion Control at Bridges |
| 02 Bridge Cleaning | 08 Repair of Bridge Concrete | 14 Concrete Sealing |
| 03 Bridge Handrail Maintenance | 09 Repair of Bridge Timber | 15 Rout and Seal |
| 04 Painting Steel Bridge Structures | 10 Bailey Bridges - Maintenance | 16 Bridge Deck Drainage |
| 05 Bridge Deck Joint Repair | 11 Animal/Pest Control | 17 Scaling (Loose Concrete or ACR Steel) |
| 06 Bridge Bearing Maintenance | 12 Bridge Surface Repair | 18 Other |

Element Group:	Decks	Length:	6.08 m			
Element Name:	Wearing Surface	Width:	6.15 m			
Location:	Entire deck	Height:	0.05 m			
Material:	Wood	Count:				
Element Type:	Timbers	Total Quantity:	38 sq. m.			
Environment:	Benign / Moderate / <u>Severe</u>		Limited Inspection <input type="checkbox"/>			
Protection System:						
Condition Data:	Units	Exc.	Good	Fair	Poor	Perform. Deficiencies
	<u>m²</u> /m / each / % / all		19	8	11	09
Comments: 50 mm x 180 mm timbers. Eleven planks have severe rot. Gravel accumulation throughout. Severe abrasion and broken planks throughout northwest corner.						
Recommended Work:		<input type="checkbox"/> Rehab <input checked="" type="checkbox"/> Replace		Maintenance Needs:		02
		<input checked="" type="checkbox"/> 1-5 years <input type="checkbox"/> 6-10 years		<input type="checkbox"/> Urgent <input type="checkbox"/> 1 year <input checked="" type="checkbox"/> 2 year		
Replace eleven wearing surface planks.				Remove gravel accumulation.		

Element Group:	Decks	Length:	6.08 m			
Element Name:	Deck Top	Width:	6.15 m			
Location:	Entire Deck	Height:	0.29 m			
Material:	Wood	Count:				
Element Type:	Laminated wood decking- longitudinal	Total Quantity:	38 sq. m.			
Environment:	Benign / <u>Moderate</u> / Severe		Limited Inspection <input checked="" type="checkbox"/>			
Protection System:	Creosote					
Condition Data:	Units	Exc.	Good	Fair	Poor	Perform. Deficiencies
	<u>m²</u> /m / each / % / all		27	6	5	00
Comments: 76 mm x 290 mm timbers. Unable to inspect deck top due to wearing surface.						
Recommended Work:		<input type="checkbox"/> Rehab <input type="checkbox"/> Replace		Maintenance Needs:		00
		<input type="checkbox"/> 1-5 years <input type="checkbox"/> 6-10 years		<input type="checkbox"/> Urgent <input type="checkbox"/> 1 year <input type="checkbox"/> 2 year		

Element Group:	Decks	Length:	6.08 m			
Element Name:	Soffit – Thin Slab	Width:	6.15 m			
Location:	Entire Deck	Height:				
Material:	Wood	Count:				
Element Type:	Laminated wood decking- longitudinal	Total Quantity:	38 sq. m.			
Environment:	Benign / <u>Moderate</u> / Severe		Limited Inspection <input type="checkbox"/>			
Protection System:	Creosote					
Condition Data:	Units	Exc.	Good	Fair	Poor	Perform. Deficiencies
	<u>m²</u> /m / each / % / all		37	1		00
Comments:						
Recommended Work:		<input type="checkbox"/> Rehab <input type="checkbox"/> Replace		Maintenance Needs:		00
		<input type="checkbox"/> 1-5 years <input type="checkbox"/> 6-10 years		<input type="checkbox"/> Urgent <input type="checkbox"/> 1 year <input type="checkbox"/> 2 year		

Element Group:	Decks	Length:	
Element Name:	Drainage	Width:	
Location:		Height:	
Material:		Count:	
Element Type:		Total Quantity:	
Environment:	Benign / Moderate <input checked="" type="checkbox"/> Severe	Limited Inspection	<input type="checkbox"/>
Protection System:			Perform. Deficiencies
Condition Data:	Units	Exc.	Good
	Fair	Poor	
	m ² / m / each / % <input checked="" type="checkbox"/> all	<input type="checkbox"/>	<input checked="" type="checkbox"/>
		<input type="checkbox"/>	<input type="checkbox"/>
Comments: Drainage provided through openings below curb.			
Recommended Work:	<input type="checkbox"/> Rehab <input type="checkbox"/> Replace <input type="checkbox"/> 1-5 years <input type="checkbox"/> 6-10 years	Maintenance Needs:	00 <input type="checkbox"/> Urgent <input type="checkbox"/> 1 year <input type="checkbox"/> 2 year

Element Group:	Sidewalks/Curbs	Length:	4.9 m
Element Name:	Curbs	Width:	0.19 m
Location:	Outside Edges of Deck	Height:	0.19 m
Material:	Wood	Count:	2 sides
Element Type:	Timbers	Total Quantity:	5 sq. m.
Environment:	Benign / Moderate <input checked="" type="checkbox"/> Severe	Limited Inspection	<input type="checkbox"/>
Protection System:	Creosote		Perform. Deficiencies
Condition Data:	Units	Exc.	Good
	Fair	Poor	
	m ² / m / each / % / all		4
			1
			08
Comments: Medium abrasion and wear at some locations. Curb doesn't extend full length of deck and cribs. 190mm x 190mm curb on 190mm x 150mm x 900mm spacers @ 2.16m centres.			
Recommended Work:	<input checked="" type="checkbox"/> Rehab <input type="checkbox"/> Replace <input checked="" type="checkbox"/> 1-5 years <input type="checkbox"/> 6-10 years	Maintenance Needs:	00 <input type="checkbox"/> Urgent <input type="checkbox"/> 1 year <input type="checkbox"/> 2 year
Extend curb full length of deck and cribs, both sides.			
Element Group:	Barriers	Length:	6.1 m
Element Name:	Railing Systems	Width:	
Location:	East and West Sides	Height:	0.79 m
Material:	Steel	Count:	2 sides
Element Type:	Steel Flex beam on wood post	Total Quantity:	13 m
Environment:	Benign / Moderate <input checked="" type="checkbox"/> Severe	Limited Inspection	<input type="checkbox"/>
Protection System:	Hot dip galvanizing		Perform. Deficiencies
Condition Data:	Units	Exc.	Good
	Fair	Poor	
	m ² / m / each / % / all		11
			2
			08
Comments: Railing system is mounted approximately 200 mm too high.			
Recommended Work:	<input checked="" type="checkbox"/> Rehab <input type="checkbox"/> Replace <input checked="" type="checkbox"/> 1-5 years <input type="checkbox"/> 6-10 years	Maintenance Needs:	00 <input type="checkbox"/> Urgent <input checked="" type="checkbox"/> 1 year <input type="checkbox"/> 2 year
Lower the railing system to the proper height.			

Element Group:	Barriers	Length:	0.19 m			
Element Name:	Posts	Width:	0.19 m			
Location:	East and West Sides of bridge and approaches	Height:	1.0 m			
Material:	Wood	Count:	13 per side			
Element Type:		Total Quantity:	26			
Environment:	Benign / Moderate / Severe	Limited Inspection	<input type="checkbox"/>			
Protection System:						
Condition Data:	Units	Exc.	Good	Fair	Poor	Perform. Deficiencies
	m ² / m each / % / all		20		6	08
Comments:						
Medium to severe end rot at five locations. Eleven offset timbers are not of standard size. 190mm x 190mm posts C/W 190mm x 190mm offsets at approaches, 2-38mm x 235mm offsets at bridge. Two rotated offset blocks.						
Recommended Work:		<input type="checkbox"/> Rehab <input checked="" type="checkbox"/> Replace		Maintenance Needs:		18
		<input checked="" type="checkbox"/> 1-5 years <input type="checkbox"/> 6-10 years		<input type="checkbox"/> Urgent <input type="checkbox"/> 1 year <input checked="" type="checkbox"/> 2 year		
Replace five guide rail posts. Replace all offsets at bridge.				Replumb offset blocks.		

Element Group:	Coatings	Length:	27 m			
Element Name:	Railing Systems	Width:				
Location:	East and West sides of bridge and approaches	Height:				
Material:		Count:	2			
Element Type:	Hot dip galvanizing	Total Quantity:	54 m			
Environment:	Benign / Moderate / Severe	Limited Inspection	<input type="checkbox"/>			
Protection System:						
Condition Data:	Units	Exc.	Good	Fair	Poor	Perform. Deficiencies
	m ² / m each / % / all		52	2		00
Comments:						
Recommended Work:		<input type="checkbox"/> Rehab <input type="checkbox"/> Replace		Maintenance Needs:		00
		<input type="checkbox"/> 1-5 years <input type="checkbox"/> 6-10 years		<input type="checkbox"/> Urgent <input type="checkbox"/> 1 year <input type="checkbox"/> 2 year		

Element Group:	Abutments	Length:				
Element Name:	Abutment Walls	Width:	6.15 m			
Location:	North and South Ends	Height:	2.5 m			
Material:	Wood	Count:	2			
Element Type:	150 mm x 190 mm timbers	Total Quantity:	31 sq. m.			
Environment:	Benign / Moderate / Severe	Limited Inspection	<input type="checkbox"/>			
Protection System:	Creosote					
Condition Data:	Units	Exc.	Good	Fair	Poor	Perform. Deficiencies
	m ² / m each / % / all		20	6	5	02
Comments:						
Abutments have horizontal displacement at centre of wall. Minor settlement at centre of abutments. End connections of bottom crib members have split and separated from other timbers. The timber post at centre of the north abutment has severe splits at the waterline. Measurements were taken to record the span at the top, midpoint, and bottom of the abutments. Span lengths are summarized as follows: West (upstream) side: top - 4.745 m (1-1) middle - 4.674 m (2-2) bottom - 4.641 m (3-3) East (downstream) side: top - 4.766 m (4-4) middle - 4.702 m (5-5) bottom - 4.719 m (6-6) Measurements were also taken to record the settlement of the abutment timbers near the centre of the abutment. Angles of deflection are summarized as follows: South side: 0.95° (1) North side: 0.55° (2)						
Recommended Work:		<input type="checkbox"/> Rehab <input type="checkbox"/> Replace		Maintenance Needs:		18
		<input type="checkbox"/> 1-5 years <input type="checkbox"/> 6-10 years		<input type="checkbox"/> Urgent <input type="checkbox"/> 1 year <input checked="" type="checkbox"/> 2 year		
				Monitor horizontal displacement, settlement, and width of cracks at corners of abutments.		

Element Group:	Foundation				Length:	
Element Name:	Foundation				Width:	
Location:					Height:	
Material:					Count:	
Element Type:					Total Quantity:	
Environment:	Benign / Moderate / Severe				Limited Inspection <input checked="" type="checkbox"/>	
Protection System:						Perform. Deficiencies
Condition Data:	Units	Exc.	Good	Fair	Poor	
	m ² / m / each / % / all					03
Comments: Settlement at abutment of approximately 0.55 degrees at north side and 0.95 degrees at south side.						
Recommended Work:				Maintenance Needs:		18
<input type="checkbox"/> Rehab <input type="checkbox"/> Replace <input type="checkbox"/> 1-5 years <input type="checkbox"/> 6-10 years				<input type="checkbox"/> Urgent <input type="checkbox"/> 1 year <input checked="" type="checkbox"/> 2 year		
				Monitor settlement at abutments.		

Element Group:	Embankments & Streams				Length:	
Element Name:	Embankments				Width:	
Location:					Height:	
Material:					Count:	4
Element Type:					Total Quantity:	
Environment:	Benign / Moderate / Severe				Limited Inspection <input type="checkbox"/>	
Protection System:						Perform. Deficiencies
Condition Data:	Units	Exc.	Good	Fair	Poor	
	m ² / m / each / % / all		2		2	15
Comments: Erosion and exposed geotextile at southeast and southwest embankments.						
Recommended Work:				Maintenance Needs:		00
<input checked="" type="checkbox"/> Rehab <input type="checkbox"/> Replace <input checked="" type="checkbox"/> 1-5 years <input type="checkbox"/> 6-10 years				<input type="checkbox"/> Urgent <input type="checkbox"/> 1 year <input type="checkbox"/> 2 year		
Provide rock protection.						

Element Group:	Embankments & Streams				Length:	
Element Name:	Slope Protection				Width:	
Location:					Height:	
Material:					Count:	4
Element Type:					Total Quantity:	
Environment:	Benign / Moderate / Severe				Limited Inspection <input type="checkbox"/>	
Protection System:						Perform. Deficiencies
Condition Data:	Units	Exc.	Good	Fair	Poor	
	m ² / m / each / % / all		2	2		15
Comments: Geotextile exposed at southeast and southwest embankments.						
Recommended Work:				Maintenance Needs:		00
<input checked="" type="checkbox"/> Rehab <input type="checkbox"/> Replace <input checked="" type="checkbox"/> 1-5 years <input type="checkbox"/> 6-10 years				<input type="checkbox"/> Urgent <input type="checkbox"/> 1 year <input type="checkbox"/> 2 year		
Provide rock protection at southeast and southwest embankment.						

Element Group:	Embankments & Streams	Length:	
Element Name:	Streams & Waterways	Width:	
Location:		Height:	
Material:		Count:	
Element Type:		Total Quantity:	
Environment:	Benign / Moderate / Severe	Limited Inspection	<input type="checkbox"/>
Protection System:			Perform. Deficiencies
Condition Data:	Units	Exc.	Good
	m ² / m / each / % / all	<input checked="" type="checkbox"/>	<input type="checkbox"/>
		Fair	Poor
		<input type="checkbox"/>	<input type="checkbox"/>
Comments:			
Fallen tree approximately 8m downstream			
Recommended Work:	<input type="checkbox"/> Rehab <input type="checkbox"/> Replace	Maintenance Needs:	00
	<input type="checkbox"/> 1-5 years <input type="checkbox"/> 6-10 years	<input type="checkbox"/> Urgent <input checked="" type="checkbox"/> 1 year <input type="checkbox"/> 2 year	
		Remove fallen tree downstream.	

Element Group:	Accessories	Length:	
Element Name:	Signs	Width:	
Location:	East and West End	Height:	
Material:		Count:	8
Element Type:		Total Quantity:	
Environment:	Benign / Moderate / Severe	Limited Inspection	<input type="checkbox"/>
Protection System:			Perform. Deficiencies
Condition Data:	Units	Exc.	Good
	m ² / m / each / % / all		8
		Fair	Poor
Comments:			
Four Hazard Marker signs at corners of bridge, two Load Posting signs and two Narrow Bridge signs at approaches. Northwest hazard sign is damaged. Hole in northeast hazard sign.			
Recommended Work:	<input type="checkbox"/> Rehab <input type="checkbox"/> Replace	Maintenance Needs:	00
	<input type="checkbox"/> 1-5 years <input type="checkbox"/> 6-10 years	<input type="checkbox"/> Urgent <input type="checkbox"/> 1 year <input type="checkbox"/> 2 year	

Element Group:	Accessories	Length:	
Element Name:	Utilities	Width:	
Location:	West Side	Height:	
Material:		Count:	1
Element Type:		Total Quantity:	1
Environment:	Benign / Moderate / Severe	Limited Inspection	<input type="checkbox"/>
Protection System:			Perform. Deficiencies
Condition Data:	Units	Exc.	Good
	m ² / m / each / % / all		1
		Fair	Poor
Comments:			
Abandoned telephone cables within plastic conduit.			
Recommended Work:	<input type="checkbox"/> Rehab <input type="checkbox"/> Replace	Maintenance Needs:	00
	<input type="checkbox"/> 1-5 years <input type="checkbox"/> 6-10 years	<input type="checkbox"/> Urgent <input type="checkbox"/> 1 year <input type="checkbox"/> 2 year	

Element Group:	Approach	Length:	6 m			
Element Name:	Railing System	Width:				
Location:	East and West Sides	Height:	0.79 m			
Material:	Steel	Count:	4			
Element Type:	Steel Flex Beam on Timber Posts	Total Quantity:	24 m			
Environment:	Benign / Moderate / <u>Severe</u>		Limited Inspection <input type="checkbox"/>			
Protection System:	Hot dip galvanizing					Perform. Deficiencies
Condition Data:	Units	Exc.	Good	Fair	Poor	
	m ² /m / each / % / all		8		16	08
Comments: Railing system is mounted approximately 200 mm too high.						
Recommended Work:		<input checked="" type="checkbox"/> Rehab <input type="checkbox"/> Replace		Maintenance Needs:		00
		<input checked="" type="checkbox"/> 1-5 years <input type="checkbox"/> 6-10 years		<input type="checkbox"/> Urgent <input type="checkbox"/> 1 year <input type="checkbox"/> 2 year		
Lower railing system to proper height.						

Element Group:	Approaches	Length:	6 m			
Element Name:	Wearing Surfaces	Width:	6.75 m			
Location:	North and South approaches	Height:				
Material:	Gravel	Count:	2			
Element Type:		Total Quantity:	81 sq. m.			
Environment:	Benign / Moderate / <u>Severe</u>		Limited Inspection <input type="checkbox"/>			
Protection System:						Perform. Deficiencies
Condition Data:	Units	Exc.	Good	Fair	Poor	
	m ² /m / each / % / all		80	1		00
Comments: Vegetation growth and gravel build-up at shoulders impedes drainage at all four corners.						
Recommended Work:		<input type="checkbox"/> Rehab <input type="checkbox"/> Replace		Maintenance Needs:		18
		<input type="checkbox"/> 1-5 years <input type="checkbox"/> 6-10 years		<input type="checkbox"/> Urgent <input checked="" type="checkbox"/> 1 year <input type="checkbox"/> 2 year		
				Remove vegetation from shoulders and regrade to improve drainage.		



Photo 1: North approach.



Photo 2: South approach.



Photo 3: Upstream elevation looking west.



Photo 4: Downstream elevation looking east.



Photo 5: Deck cross-section.



Photo 6: Underside of bridge.



Photo 7: North abutment and embankment.



Photo 8: South abutment and embankment.

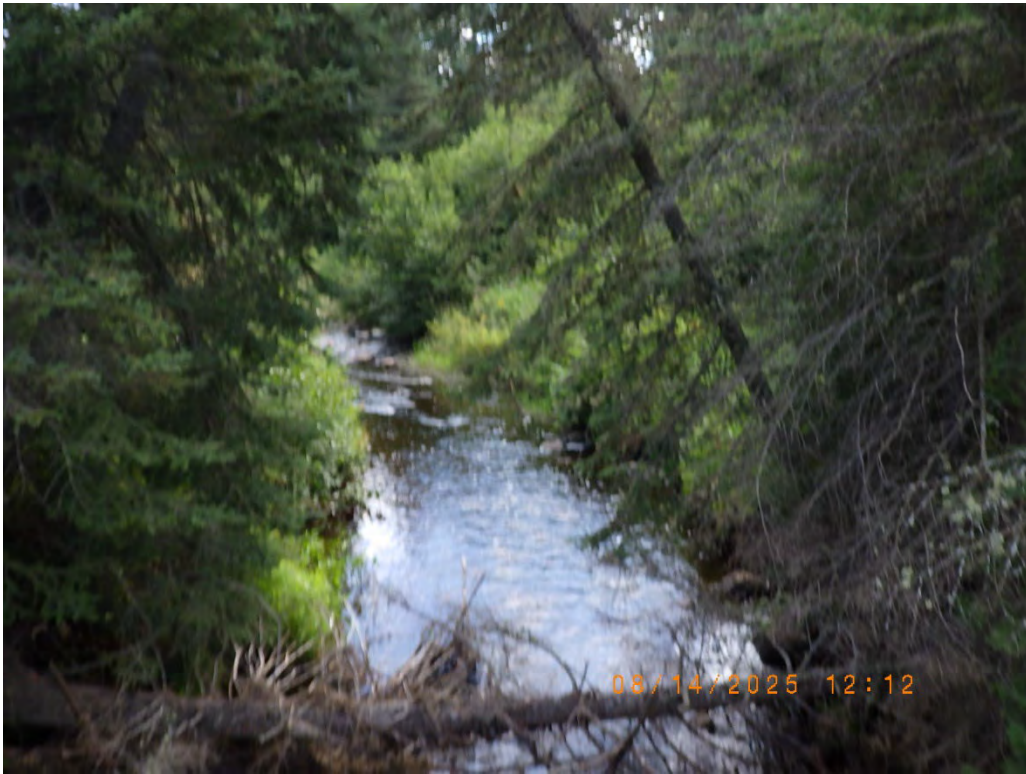


Photo 9: Downstream view from bridge.



Photo 10: Upstream view from bridge.



Photo 11: North deck joint.



Photo 12: South deck joint.



Photo 13: Northeast embankment.



Photo 14: Northwest embankment.



Photo 15: Southeast embankment.



Photo 16: Southwest embankment.



Photo 17: Severe rot at wearing surface planks.



Photo 18: Curb does not extend full length of bridge, guide rail mounted 200 mm too high.



Photo 19: Medium abrasion at curb.



Photo 20: Loose steel angle next to southwest abutment.



Photo 21: PVC pipe housing abandoned phone lines.



Photo 22: Loose guide rail splice bolt.



Photo 23: Medium to severe rot at posts.



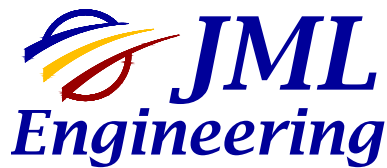
Photo 24: Broken reflector strip.



Structural Inspection Ilkka Drive Culvert at Brule Creek

**FOR
CONMEE TOWNSHIP**





105 Villa Street, 2nd Floor
Thunder Bay, ON P7A7W5
Phone: 807.345.1131
Fax: 807.345.1229
Email: info@jmleng.com

ILKKA DRIVE CULVERT AT BRULE CREEK

1.0 Description

The Ilkka Drive Culvert is located approximately 0.4 km east of Highway 11/17 on Ilkka Drive, (accessed by Mokomon Road) at Brule Creek.

The structure is a circular corrugated steel pipe culvert surrounded by granular fill, and includes concrete inlet and outlet structures. The overall length of the structure is 26 metres. The culvert is 4.4 metres in diameter.

The deck consists of a gravel wearing surface. The railing system along both sides of the crossing consists of a three cable rail system and timber posts.

The embankments are vegetated with grasses and trees. At the time of the field investigation, the width of the stream was estimated at 4000 mm, the water depth near midspan was approximately 650 mm at the upstream side, and a vertical clearance of approximately 3750 mm was measured from the obvert of the culvert to the water surface.

2.0 Significant Findings

Vegetation growth was observed at the edges of the road at the approaches.

Trees were observed growing above the culvert at the outlet.

Erosion has occurred at the southeast embankment.

Cracking was observed at the culvert barrel plates at 30 bolt locations.

Three broken barrier posts were observed and 12 contained severe rot.

Cable was not connected to two guide rail posts on the northwest side.

One guide rail post was missing a cable clip.

The majority of reflector strips on the guide rail post were weathered and cracked.

3.0 Conclusions and Recommendations

The cracking observed at 30 bolt locations at the culvert barrel indicate that the structure is no longer resisting the loads applied to it adequately. This may be due to the gradual section loss of the culvert barrel below the water line, settlement of the foundation soils, or erosion and undermining of the barrel. Based upon this deficiency, the estimated remaining service life of the culvert is 10-15 years. Rehabilitation or replacement at the structure may be required in this time frame.

The following maintenance repairs are recommended within the next two years:

- Replace 17 guide rail posts.
- Remove the trees above the culvert at the outlet.
- Provide rock protection at southeast embankment.
- Patch scaled concrete at downstream headwall.

4.0 Estimated Construction Costs

The following are the estimated construction costs for the recommended remedial repairs:

Replace 17 guide rail posts	\$ 12,000.00
Remove the trees at the outlet	\$ 300.00
Provide rock protection at southeast embankment	\$ 1,200.00
Patch scaled concrete at downstream headwall	<u>\$ 2,500.00</u>
Total Maintenance Cost Estimate	<u>\$ 16,000.00 + HST</u>

The Bridge Condition Index (BCI) is the ratio of the value of each structure element in its current state to the total replacement value of the structure. The overall BCI at the Ilkka Drive Culvert is 71. This BCI value implies that the structure is in good condition. The guide rail posts were in poor condition however and should be replaced.

5.0 Closing

Even though the structural inspection was carefully done, we do not claim that the observations made represent all of the faults or imperfections which may exist.

We trust this report is satisfactory. Please contact the undersigned if you require any additional information or clarification.

Best regards,

JML Engineering Ltd.



Andrew Olesen, P.Eng.
Project Engineer



Michael Edmonds, P.Eng.
Vice-President

:ao
Encl.

P:\2024001 - Township of Conmee - Bi-annual Inspection Five Bridges One Culvert\Admin\Reports\2025\Ilkka Drive Culvert\2 - Summary.doc

Inventory Data:			
Structure Name	Ilkka Drive Culvert at Brule Creek		
Main Hwy/Road #	<input type="text"/>	On <input checked="" type="checkbox"/> Under <input type="checkbox"/>	Crossing Type: <input type="checkbox"/> Navig. Water <input checked="" type="checkbox"/> Non-Navig. Water <input type="checkbox"/> Rail <input type="checkbox"/> Road <input type="checkbox"/> Ped. <input type="checkbox"/> Other
Hwy/Road Name	Ilkka Drive		
Structure Location	0.4 km East of Hwy 11/17		
Latitude	48°29'00"N	Longitude	89°38'01"W
Owner(s)	Conmee Township	Heritage Designation:	<input type="checkbox"/> Not Cons. <input type="checkbox"/> Cons./not App. <input type="checkbox"/> List/not Desig. <input type="checkbox"/> Desig./not List <input type="checkbox"/> Desig. & List
MTO Region	Northwestern	Road Class:	Freeway <input type="checkbox"/> Arterial <input type="checkbox"/> Collector <input checked="" type="checkbox"/> Local <input type="checkbox"/>
MTO District	Thunder Bay	Posted Speed	60 km/h No. of Lanes 2
Old County	Thunder Bay	AADT	% Trucks
Geographic Twp.	473	Inspection Route Sequence	
Structure Type	Culvert	Interchange Number	
Total Deck Length	4.4 (m)	Interchange Structure Number	
Overall Str. Width	26 (m)	Min. Vertical Clearance	3.5 (m)
Total Deck Area	35.2 (sq.m)	Special Routes:	<input type="checkbox"/> Transit <input type="checkbox"/> Truck <input type="checkbox"/> School <input type="checkbox"/> Bicycle
Roadway Width	8 (m)	Detour Length Around Bridge	3.0 (km)
Skew Angle	0 (Degrees)	Direction of Structure	E/W
No. of Spans	1	Fill on Structure	2.4 (m)
Span Lengths	4.4 (m)		

Historical Data:			
Year Built	<input type="text"/>	Year of Last Major Rehab.	<input type="text"/>
Last OSIM Inspection	2023	Last Evaluation	2010
Last Enhanced OSIM Inspection	<input type="text"/>	Current Load Limit	/ / (tonnes)
Enhanced Access Equipment (ladder, boat, lift, etc.)	<input type="text"/>	Load Limit By-Law #	<input type="text"/>
Last Underwater Inspection	<input type="text"/>	By-Law Expiry Date	<input type="text"/>
Last Condition Survey	<input type="text"/>		
Rehab History: (Date/description) 2016 - Replaced 74 posts. Repaired spalls at inlet. Replaced the culvert anchorage to inlet wall. Provided rock protection upstream of inlet. Removed vegetation and regraded the shoulders at both approaches.			

Field Inspection Information:			
Date of Inspection:	August 14, 2025	Type of Inspection:	<input checked="" type="checkbox"/> OSIM <input type="checkbox"/> Enhanced OSIM
Inspector:	Andrew Olesen, P.Eng., JML Engineering		
Others in Party:			
Access Equipment Used:	Chest Waders		
Weather:	Sunny		
Temperature:	17° C		

Additional Investigations Required:		Priority		
		None	Normal	Urgent
Material Condition Survey				
<input type="checkbox"/>	Detailed Deck Condition Survey:	<input checked="" type="checkbox"/>	<input type="checkbox"/>	<input type="checkbox"/>
<input type="checkbox"/>	Non-destructive Delamination Survey of Asphalt-Covered Deck:	<input checked="" type="checkbox"/>	<input type="checkbox"/>	<input type="checkbox"/>
<input type="checkbox"/>	Concrete Substructure Condition Survey:	<input checked="" type="checkbox"/>	<input type="checkbox"/>	<input type="checkbox"/>
<input type="checkbox"/>	Detailed Coating Condition Survey:	<input checked="" type="checkbox"/>	<input type="checkbox"/>	<input type="checkbox"/>
<input type="checkbox"/>	Detailed Timber Investigation	<input checked="" type="checkbox"/>	<input type="checkbox"/>	<input type="checkbox"/>
<input type="checkbox"/>	Post-Tensioned Strand Investigation	<input checked="" type="checkbox"/>	<input type="checkbox"/>	<input type="checkbox"/>
Underwater Investigation:		<input checked="" type="checkbox"/>	<input type="checkbox"/>	<input type="checkbox"/>
Fatigue Investigation:		<input checked="" type="checkbox"/>	<input type="checkbox"/>	<input type="checkbox"/>
Seismic Investigation:		<input checked="" type="checkbox"/>	<input type="checkbox"/>	<input type="checkbox"/>
Structure Evaluation:		<input checked="" type="checkbox"/>	<input type="checkbox"/>	<input type="checkbox"/>
Monitoring				
<input type="checkbox"/>	Monitoring of Deformations, Settlements and Movements:	<input checked="" type="checkbox"/>	<input type="checkbox"/>	<input type="checkbox"/>
<input type="checkbox"/>	Monitoring Crack Widths:	<input checked="" type="checkbox"/>	<input type="checkbox"/>	<input type="checkbox"/>
Investigation Notes:				

Overall Structure Notes:			
Recommended Work on Structure:	<input type="checkbox"/> None <input checked="" type="checkbox"/> Minor Rehab. <input type="checkbox"/> Major Rehab. <input type="checkbox"/> Replace		
Timing of Recommended Work:	<input checked="" type="checkbox"/> 1 to 5 years <input type="checkbox"/> 6 to 10 years		
Overall Comments:	Replace barrier posts. Remove vegetation from edges of road. Remove trees above culvert at outlet. Provide rock protection at southeast embankment.		
Date of Next Inspection:	2027		

Suspected Performance Deficiencies

- | | | |
|--|---|-------------------------------------|
| 01 Load carrying capacity | 06 Bearing not uniformly loaded/unstable | 12 Slippery surfaces |
| 02 Excessive deformations (deflections & rotations) | 07 Jammed expansion joint | 13 Flooding/channel blockage |
| 03 Continuing settlement | 08 Pedestrian/vehicular hazard | 14 Undermining of foundation |
| 04 Continuing movements | 09 Rough riding surface | 15 Unstable embankments |
| 05 Seized bearings | 10 Surface ponding | 16 Other |
| | 11 Deck drainage | |

Maintenance Needs

- | | | |
|---|--|---|
| 01 Lift and Swing Bridge Maintenance | 07 Repair to Structural Steel | 13 Erosion Control at Bridges |
| 02 Bridge Cleaning | 08 Repair of Bridge Concrete | 14 Concrete Sealing |
| 03 Bridge Handrail Maintenance | 09 Repair of Bridge Timber | 15 Rout and Seal |
| 04 Painting Steel Bridge Structures | 10 Bailey Bridges - Maintenance | 16 Bridge Deck Drainage |
| 05 Bridge Deck Joint Repair | 11 Animal/Pest Control | 17 Scaling (Loose Concrete or ACR Steel) |
| 06 Bridge Bearing Maintenance | 12 Bridge Surface Repair | 18 Other |

Element Group:	Approaches	Length:	6 m			
Element Name:	Wearing Surface	Width:	8 m			
Location:		Height:				
Material:	Gravel	Count:	2			
Element Type:		Total Quantity:	96 sq. m.			
Environment:	Benign / Moderate / Severe	Limited Inspection	<input type="checkbox"/>			
Protection System:						
Condition Data:	Units	Exc.	Good	Fair	Poor	Perform. Deficiencies
	m ² /m / each / % / all		93	3		00
Comments: Vegetation growth at edges of road.						
Recommended Work:		<input type="checkbox"/> Rehab <input type="checkbox"/> Replace		Maintenance Needs:		00
		<input type="checkbox"/> 1-5 years <input type="checkbox"/> 6-10 years		<input type="checkbox"/> Urgent <input checked="" type="checkbox"/> 1 year <input type="checkbox"/> 2 year		
		Remove vegetation.				

Element Group:	Barriers	Length:	133 m			
Element Name:	Railing Systems	Width:				
Location:	East and West sides, full length	Height:				
Material:	Steel	Count:	2			
Element Type:	Three Cables	Total Quantity:	266 m			
Environment:	Benign / Moderate / Severe	Limited Inspection	<input type="checkbox"/>			
Protection System:						
Condition Data:	Units	Exc.	Good	Fair	Poor	Perform. Deficiencies
	m ² /m / each / % / all		260	6		
Comments:						
Recommended Work:		<input type="checkbox"/> Rehab <input type="checkbox"/> Replace		Maintenance Needs:		
		<input type="checkbox"/> 1-5 years <input type="checkbox"/> 6-10 years		<input type="checkbox"/> Urgent <input type="checkbox"/> 1 year <input type="checkbox"/> 2 year		

Element Group:	Barriers	Length:	0.15 m			
Element Name:	Posts	Width:	0.15 m			
Location:	Outside Edges of Deck	Height:	0.9 m			
Material:	Wood	Count:	37 per side			
Element Type:	Wood post and 3 cable	Total Quantity:	74			
Environment:	Benign / Moderate / Severe	Limited Inspection	<input type="checkbox"/>			
Protection System:	Creosote					
Condition Data:	Units	Exc.	Good	Fair	Poor	Perform. Deficiencies
	m ² /m / each / % / all		67	3	5	08
Comments: Five broken and rotten posts. All posts have medium checks and splits. 12 posts have very severe rot. All other posts have light to medium rot						
Recommended Work:		<input type="checkbox"/> Rehab <input checked="" type="checkbox"/> Replace		Maintenance Needs:		18
		<input checked="" type="checkbox"/> 1-5 years <input type="checkbox"/> 6-10 years		<input type="checkbox"/> Urgent <input type="checkbox"/> 1 year <input type="checkbox"/> 2 year		
Replace broken and rotten posts.						

Ontario Structure Inspection Manual – Inspection Form

MTO Site Number:

Element Group:	Coatings	Length:	26 m			
Element Name:	Barrel	Width:	4.4 m diameter			
Location:		Height:				
Material:	Hot dip galvanizing	Count:				
Element Type:		Total Quantity:	360 sq. m.			
Environment:	Benign <u>Moderate</u> Severe		Limited Inspection <input type="checkbox"/>			
Protection System:						Perform. Deficiencies
Condition Data:	Units	Exc.	Good	Fair	Poor	
	<u>m²</u> / m / each / % / all		295	65		00
Comments: Light to medium corrosion at waterline. A few areas of light corrosion at top of barrel. Cracking at 30 splice bolts.						
Recommended Work:		<input type="checkbox"/> Rehab <input type="checkbox"/> Replace		Maintenance Needs:		00
		<input type="checkbox"/> 1-5 years <input type="checkbox"/> 6-10 years		<input type="checkbox"/> Urgent <input type="checkbox"/> 1 year <input type="checkbox"/> 2 year		

Element Group:	Culverts	Length:	1.6 m			
Element Name:	Inlet Components	Width:	0.38 m			
Location:	Ends of Culvert	Height:	1.6 m			
Material:	Cast-in-place concrete	Count:	2			
Element Type:	Reinforced Concrete	Total Quantity:	5 sq. m			
Environment:	<u>Benign</u> Moderate / Severe		Limited Inspection <input type="checkbox"/>			
Protection System:						Perform. Deficiencies
Condition Data:	Units	Exc.	Good	Fair	Poor	
	m ² / m / each / % / all		5			00
Comments:						
Recommended Work:		<input type="checkbox"/> Rehab <input type="checkbox"/> Replace		Maintenance Needs:		00
		<input type="checkbox"/> 1-5 years <input type="checkbox"/> 6-10 years		<input type="checkbox"/> Urgent <input type="checkbox"/> 1 year <input type="checkbox"/> 2 year		

Element Group:	Culverts	Length:	1.6 m			
Element Name:	Outlet Components	Width:	0.38 m			
Location:	Ends of Culvert	Height:	1.6 m			
Material:	Cast-in-place concrete	Count:	2			
Element Type:	Reinforced Concrete	Total Quantity:	5 sq. m			
Environment:	<u>Benign</u> / Moderate / Severe		Limited Inspection <input type="checkbox"/>			
Protection System:						Perform. Deficiencies
Condition Data:	Units	Exc.	Good	Fair	Poor	
	m ² / m / each / % / all			5		16
Comments: Scaling at headwall.						
Recommended Work:		<input type="checkbox"/> Rehab <input type="checkbox"/> Replace		Maintenance Needs:		08
		<input type="checkbox"/> 1-5 years <input type="checkbox"/> 6-10 years		<input type="checkbox"/> Urgent <input type="checkbox"/> 1 year <input checked="" type="checkbox"/> 2 year		
Repair concrete.						

Ontario Structure Inspection Manual – Inspection Form

MTO Site Number:

Element Group:	Culverts	Length:	26 m			
Element Name:	Barrels	Width:	4.4 m diameter			
Location:		Height:				
Material:	Corrugated steel	Count:				
Element Type:		Total Quantity:	360 sq. m.			
Environment:	Benign / <u>Moderate</u> / Severe		Limited Inspection <input type="checkbox"/>			
Protection System:	Hot dip galvanizing					Perform. Deficiencies
Condition Data:	Units <u>m²</u> /m / each / % / all	Exc.	Good	Fair	Poor	
			350	10		16
Comments: Light to medium corrosion at waterline. Few areas of light corrosion at top of barrel. Trees growing above culvert at outlet. Cracking at bolts.						
Recommended Work:		<input checked="" type="checkbox"/> Rehab <input type="checkbox"/> Replace		Maintenance Needs:		00
		<input checked="" type="checkbox"/> 1-5 years <input type="checkbox"/> 6-10 years		<input type="checkbox"/> Urgent <input type="checkbox"/> 1 year <input type="checkbox"/> 2 year		
Remove trees above culvert at outlet. Monitor cracks at bolts.						

Element Group:	Deck	Length:	4.4 m			
Element Name:	Wearing Surface	Width:	8 m			
Location:		Height:				
Material:	Gravel	Count:				
Element Type:		Total Quantity:	36 sq. m.			
Environment:	Benign / Moderate / <u>Severe</u>		Limited Inspection <input type="checkbox"/>			
Protection System:						Perform. Deficiencies
Condition Data:	Units <u>m²</u> /m / each / % / all	Exc.	Good	Fair	Poor	
			34	2		00
Comments: Vegetation growth at edges of road.						
Recommended Work:		<input type="checkbox"/> Rehab <input type="checkbox"/> Replace		Maintenance Needs:		00
		<input type="checkbox"/> 1-5 years <input type="checkbox"/> 6-10 years		<input type="checkbox"/> Urgent <input checked="" type="checkbox"/> 1 year <input type="checkbox"/> 2 year		
Remove vegetation.						

Element Group:	Foundations	Length:				
Element Name:	Foundation (below ground level)	Width:				
Location:		Height:				
Material:		Count:				
Element Type:		Total Quantity:				
Environment:	Benign / Moderate / Severe		Limited Inspection <input type="checkbox"/>			
Protection System:						Perform. Deficiencies
Condition Data:	Units m ² / m / each / % / all	Exc.	Good	Fair	Poor	
						00
Comments: Rated for performance only. Foundation appears stable.						
Recommended Work:		<input type="checkbox"/> Rehab <input type="checkbox"/> Replace		Maintenance Needs:		00
		<input type="checkbox"/> 1-5 years <input type="checkbox"/> 6-10 years		<input type="checkbox"/> Urgent <input type="checkbox"/> 1 year <input type="checkbox"/> 2 year		

Element Group:	Embankments & Streams	Length:	
Element Name:	Streams & Waterways	Width:	
Location:		Height:	
Material:		Count:	
Element Type:		Total Quantity:	
Environment:	<u>Benign</u> / Moderate / Severe	Limited Inspection	<input type="checkbox"/>
Protection System:			Perform. Deficiencies
Condition Data:	Units m ² / m / each / % / <u>all</u>	Exc. <input type="checkbox"/>	Good <input checked="" type="checkbox"/>
		Fair <input type="checkbox"/>	Poor <input type="checkbox"/>
			13
Comments:			
Recommended Work:		<input type="checkbox"/> Rehab <input type="checkbox"/> Replace	Maintenance Needs:
		<input type="checkbox"/> 1-5 years <input type="checkbox"/> 6-10 years	<input type="checkbox"/> Urgent <input type="checkbox"/> 1 year <input type="checkbox"/> 2 year

Element Group:	Embankments & Streams	Length:	
Element Name:	Embankments	Width:	
Location:	East and West sides	Height:	
Material:		Count:	6
Element Type:		Total Quantity:	6
Environment:	Benign / Moderate / <u>Severe</u>	Limited Inspection	<input type="checkbox"/>
Protection System:	Vegetation		Perform. Deficiencies
Condition Data:	Units m ² / m / <u>each</u> / % / all	Exc.	Good 6
		Fair	Poor
			00
Comments:			
Recommended Work:		<input type="checkbox"/> Rehab <input type="checkbox"/> Replace	Maintenance Needs:
		<input type="checkbox"/> 1-5 years <input type="checkbox"/> 6-10 years	<input type="checkbox"/> Urgent <input type="checkbox"/> 1 year <input type="checkbox"/> 2 year



Photo 1: North approach.



Photo 2: South approach.



Photo 3: Upstream elevation.



Photo 4: Downstream elevation.



Photo 5: Upstream view.



Photo 6: Downstream view.



Photo 7: View inside barrel.



Photo 8: Broken guide rail posts.



Photo 9: Light corrosion at top of barrel.



Photo 10: Cracking at bolts inside barrel.



Photo 11: Scaling at downstream headwall.



Photo 12: Severe section loss at guide rail posts.



Photo 13: Sign post without sign.



Structural Inspection Pokki Road Bridge over Brule Creek

**FOR
CONMEE TOWNSHIP**



POKKI ROAD BRIDGE OVER BRULE CREEK

1.0 Description

The Pokki Road Bridge is located approximately 7 km west of Highway 11/17 on Pokki Road, accessed by Mokomon Road and Enders Road. The structure crosses Brule Creek.

The structure is a single lane, single span bridge consisting of steel girders with a transverse nail laminated timber deck supported on open cell timber cribs. The overall length of the bridge is approximately 12.2 m and the overall width is 5.5 m. The bridge is constructed at a skew angle of approximately 45 degrees relative to the waterway.

The superstructure includes a timber wearing surface, a timber deck, steel railings, and timber curbs. The timber wearing surface is constructed of 70 mm x 200 mm untreated, sawn timber planks, with a width of approximately 4.9 m. The transverse laminated deck consists of 76 mm x 260 mm creosote treated sawn timbers. The galvanized railing system consists of a steel beam guide rail supported by W150x37 steel posts. The curbs consist of 190 mm x 190 mm CCA treated sawn timbers on 70 mm x 190 mm x 850 mm long timber spacers at 1.85 m centres.

The deck is supported by seven-W610x125 steel wide flange girders spaced at 890 mm centres. Each girder end sits upon a neoprene rubber bearing, and the bearings sit upon a 305 mm x 305 mm creosote treated bearing timber. The abutments are rock-filled open-cell timber cribs consisting of 200 mm x 200 mm creosote treated timbers c/w a timber ballast wall consisting of 76 mm x 200 mm creosote treated timbers.

Hazard Marker signs are located at the four corners of the bridge. Narrow Bridge warning signs are located approximately 150 metres from the bridge approaches.

The embankments are vegetated with grasses and trees. At the time of the field investigation, the width of the stream was estimated at 3500 mm, the water depth near midspan was approximately 200 mm, and a vertical clearance of 2350 mm was measured from the underside of the bridge to the water surface.

2.0 Significant Findings

Medium to severe rot was observed at 22 wearing surface planks. Gravel has accumulated at the sides of the bridge.

The majority of the guide rail sections are lapped in the wrong direction.

Impact damage was observed at the northwest, southwest and southeast ends of the guide rail.

All post to guide rail bolts have insufficient thread projection.

Minor fill loss was observed at the west abutment. Moderate fill loss was observed at the east abutment. The west abutment is rotating west 1.7°.

Gravel accumulation at the shoulders of both approaches impedes drainage.

A tree is growing at the south end of the east abutment.

3.0 Monitoring

Due to the apparent rotation of the west abutment, a monitoring system was established at the Pokki Road Bridge. An inclinometer was placed at the top horizontal timber at the south side of the west abutment. The readings taken to date can be summarized below.

West Abutment Rotation Monitoring	
Date	Reading
May 13, 2021	1.75°
October 6, 2023	1.7°
August 14, 2025	1.6°

4.0 Conclusions and Recommendations

The following remedial repairs are recommended within the next two years.

- Replace 22 wearing surface planks. Remove the gravel from the sides of the bridge.
- Remove guide rail and lap sections in the proper direction.
- Replace damaged sections of guide rail.
- Replace all post to guide rail bolts to ensure sufficient thread projection.
- Provide fill at both abutments.
- Regrade shoulders at both approaches.
- Remove the tree at the south end of the east abutment.

5.0 Estimated Construction Costs

The following are the estimated construction costs for the recommended remedial repairs:

Replace 22 wearing surface planks and remove gravel	\$ 3,500.00
Remove guide rail and reinstall in the proper direction	\$ 3,000.00
Replace all post to guide rail bolts	\$ 1,500.00
Provide fill at both abutments	\$ 5,200.00
Regrade shoulders at both approaches	\$ 1,000.00
Remove tree at east abutment	<u>\$ 300.00</u>
Subtotal	\$ 14,500.00
Mob/Demob (15%)	\$ 2,000.00
Engineering and Contingency (35%)	<u>\$ 5,000.00</u>
Total Construction Cost Estimate	<u>\$ 21,500.00 + HST</u>

The Bridge Condition Index (BCI) is the ratio of the value of each bridge element in its current state to the total replacement value of the bridge. The overall BCI of the Pokki Road Bridge is 71. This BCI value indicates the structure is in good condition. Based on the settlement/rotation observed at the west abutment, the estimated remaining life of the bridge is approximately 10 – 15 years.

6.0 Closing

Even though the structural inspection was carefully done, we do not claim that the observations made represent all of the faults or imperfections which may exist.

We trust this report is satisfactory. Please contact the undersigned if you require any additional information or clarification.

Best regards,

JML Engineering Ltd.



Andrew Olesen, P.Eng.
Project Engineer



Michael Edmonds, P.Eng.
Vice-President

:ao
Encl.

P:\2024001 - Township of Conmee - Bi-annual Inspection Five Bridges One Culvert\Admin\Reports\2025\Pokki Road Bridge\2 - Summary.doc

Inventory Data:			
Structure Name	Pokki Road Bridge over Brule Creek		
Main Hwy/Road #	<input type="text"/>	On <input type="checkbox"/> Under <input type="checkbox"/>	Crossing Type: <input type="checkbox"/> Navig. Water <input checked="" type="checkbox"/> Non-Navig. Water <input type="checkbox"/> Rail <input type="checkbox"/> Road <input type="checkbox"/> Ped. <input type="checkbox"/> Other
Hwy/Road Name	Pokki Road		
Structure Location	7.0 km West of Hwy 11/17		
Latitude	48° 28' 17" N	Longitude	89° 41' 30" W
Owner(s)	Conmee Township	Heritage Designation:	<input type="checkbox"/> Not Cons. <input type="checkbox"/> Cons./not App. <input type="checkbox"/> List/not Desig. <input type="checkbox"/> Desig./not List <input type="checkbox"/> Desig. & List
MTO Region	Northwestern	Road Class:	Freeway <input type="checkbox"/> Arterial <input type="checkbox"/> Collector <input checked="" type="checkbox"/> Local <input type="checkbox"/>
MTO District	Thunder Bay	Posted Speed	60 km/hr No. of Lanes 1
Old County	Thunder Bay	AADT	% Trucks
Geographic Twp.	473	Inspection Route Sequence	
Structure Type	Steel Girder/Timber Deck	Interchange Number	
Total Deck Length	12.15 (m)	Interchange Structure Number	
Overall Str. Width	5.5 (m)	Min. Vertical Clearance	2.15 (m)
Total Deck Area	66.8 (sq.m)	Special Routes:	<input type="checkbox"/> Transit <input type="checkbox"/> Truck <input type="checkbox"/> School <input type="checkbox"/> Bicycle
Roadway Width	4.9 (m)	Detour Length Around Bridge	N/A (km)
Skew Angle	45 (Degrees)	Direction of Structure	East/West
No. of Spans	1	Fill on Structure	(m)
Span Lengths	12.15 (m)		

Historical Data:			
Year Built	<input type="text"/>	Year of Last Major Rehab.	<input type="text"/>
Last OSIM Inspection	2023	Last Evaluation	2010
Last Enhanced OSIM Inspection	<input type="text"/>	Current Load Limit	/ / (tonnes)
Enhanced Access Equipment (ladder, boat, lift, etc.)	<input type="text"/>	Load Limit By-Law #	<input type="text"/>
Last Underwater Inspection	<input type="text"/>	By-Law Expiry Date	<input type="text"/>
Last Condition Survey	2016		
Rehab History: (Date/description) 2016 - Replaced wearing surface. Replaced curbs and spacers. Replaced Hazard Marker signs. Replaced west approach asphalt wearing surface.			

Field Inspection Information:			
Date of Inspection:	August 14, 2025	Type of Inspection:	<input checked="" type="checkbox"/> OSIM <input type="checkbox"/> Enhanced OSIM
Inspector:	Andrew Olesen, P.Eng., JML Engineering		
Others in Party:			
Access Equipment Used:			
Weather:	Sunny		
Temperature:	19° C		

Additional Investigations Required:		Priority		
		None	Normal	Urgent
Material Condition Survey				
<input type="checkbox"/>	Detailed Deck Condition Survey:	<input checked="" type="checkbox"/>	<input type="checkbox"/>	<input type="checkbox"/>
<input type="checkbox"/>	Non-destructive Delamination Survey of Asphalt-Covered Deck:	<input checked="" type="checkbox"/>	<input type="checkbox"/>	<input type="checkbox"/>
<input type="checkbox"/>	Concrete Substructure Condition Survey:	<input checked="" type="checkbox"/>	<input type="checkbox"/>	<input type="checkbox"/>
<input type="checkbox"/>	Detailed Coating Condition Survey:	<input checked="" type="checkbox"/>	<input type="checkbox"/>	<input type="checkbox"/>
<input type="checkbox"/>	Detailed Timber Investigation	<input checked="" type="checkbox"/>	<input type="checkbox"/>	<input type="checkbox"/>
<input type="checkbox"/>	Post-Tensioned Strand Investigation	<input checked="" type="checkbox"/>	<input type="checkbox"/>	<input type="checkbox"/>
Underwater Investigation:		<input checked="" type="checkbox"/>	<input type="checkbox"/>	<input type="checkbox"/>
Fatigue Investigation:		<input checked="" type="checkbox"/>	<input type="checkbox"/>	<input type="checkbox"/>
Seismic Investigation:		<input checked="" type="checkbox"/>	<input type="checkbox"/>	<input type="checkbox"/>
Structure Evaluation:		<input checked="" type="checkbox"/>	<input type="checkbox"/>	<input type="checkbox"/>
Monitoring				
<input type="checkbox"/>	Monitoring of Deformations, Settlements and Movements:	<input type="checkbox"/>	<input checked="" type="checkbox"/>	<input type="checkbox"/>
<input type="checkbox"/>	Monitoring Crack Widths:	<input checked="" type="checkbox"/>	<input type="checkbox"/>	<input type="checkbox"/>
Investigation Notes:				
Monitor rotation at west abutment.				

Overall Structure Notes:			
Recommended Work on Structure:	<input type="checkbox"/> None <input checked="" type="checkbox"/> Minor Rehab. <input type="checkbox"/> Major Rehab. <input type="checkbox"/> Replace		
Timing of Recommended Work:	<input checked="" type="checkbox"/> 1 to 5 years <input type="checkbox"/> 6 to 10 years		
Overall Comments:	Replace 22 wearing surface planks. Remove gravel accumulation from deck top and wearing surface. Replace all post to guide rail bolts. Tighten loose bolts. Provide fill at both abutments. Remove debris upstream of bridge. Replace east and west approach wearing surface. Provide fill at east abutment. Remove tree at east abutment. Replace damaged section of curb.		
Date of Next Inspection:	2027		

Suspected Performance Deficiencies

- | | | |
|--|---|---|
| 01 Load carrying capacity | 06 Bearing not uniformly loaded/unstable | 12 Slippery surfaces |
| 02 Excessive deformations (deflections & rotations) | 07 Jammed expansion joint | 13 Flooding/channel blockage |
| 03 Continuing settlement | 08 Pedestrian/vehicular hazard | 14 Undermining of foundation |
| 04 Continuing movements | 09 Rough riding surface | 15 Unstable embankments |
| 05 Seized bearings | 10 Surface ponding | 16 Other |
| Maintenance Needs | | |
| 01 Lift and Swing Bridge Maintenance | 07 Repair to Structural Steel | 13 Erosion Control at Bridges |
| 02 Bridge Cleaning | 08 Repair of Bridge Concrete | 14 Concrete Sealing |
| 03 Bridge Handrail Maintenance | 09 Repair of Bridge Timber | 15 Rout and Seal |
| 04 Painting Steel Bridge Structures | 10 Bailey Bridges - Maintenance | 16 Bridge Deck Drainage |
| 05 Bridge Deck Joint Repair | 11 Animal/Pest Control | 17 Scaling (Loose Concrete or ACR Steel) |
| 06 Bridge Bearing Maintenance | 12 Bridge Surface Repair | 18 Other |

Element Group:	Decks	Length:	12.15 m
Element Name:	Wearing Surface	Width:	4.5 m
Location:	Entire deck	Height:	0.07 m
Material:	Timber 70 mm x 200 mm planks	Count:	
Element Type:		Total Quantity:	55 sq. m.
Environment:	Benign / Moderate / Severe	Limited Inspection	<input type="checkbox"/>
Protection System:			
Condition Data:	Units	Exc.	Good
	Fair	Poor	Perform. Deficiencies
	m ² /m / each / % / all		5
			12
			38
			09
Comments:			
Medium to severe rot observed at 22 wearing surface planks. Medium abrasion throughout. Gravel accumulation at North and South sides. Gravel accumulating in voids created by rot.			
Recommended Work:		Maintenance Needs:	
<input type="checkbox"/> Rehab <input checked="" type="checkbox"/> Replace		02	
<input checked="" type="checkbox"/> 1-5 years <input type="checkbox"/> 6-10 years		<input type="checkbox"/> Urgent <input checked="" type="checkbox"/> 1 year <input type="checkbox"/> 2 year	
Replace 22 wearing surface planks.		Remove gravel accumulation	

Element Group:	Decks	Length:	12.15 m
Element Name:	Deck Top	Width:	5.5 m
Location:	Entire Deck	Height:	0.26 m
Material:	Wood	Count:	
Element Type:	Laminated wood decking - transverse	Total Quantity:	67 sq. m.
Environment:	Benign / Moderate / Severe	Limited Inspection	<input checked="" type="checkbox"/>
Protection System:	None		
Condition Data:	Units	Exc.	Good
	Fair	Poor	Perform. Deficiencies
	m ² /m / each / % / all		63
			4
			00
Comments:			
76 mm x 260 mm timbers. Unable to inspect most of deck top due to wearing surface. Gravel accumulation at sides of bridge. Medium rot observed at the ends of 4 deck timbers.			
Recommended Work:		Maintenance Needs:	
<input type="checkbox"/> Rehab <input type="checkbox"/> Replace		02	
<input type="checkbox"/> 1-5 years <input type="checkbox"/> 6-10 years		<input type="checkbox"/> Urgent <input checked="" type="checkbox"/> 1 year <input type="checkbox"/> 2 year	
		Gravel accumulation.	

Element Group:	Decks	Length:	12.15 m
Element Name:	Soffit – Thin Slab	Width:	5.5 m
Location:	Entire Deck	Height:	
Material:	Wood	Count:	
Element Type:	Laminated wood decking - transverse	Total Quantity:	67 sq. m.
Environment:	Benign / Moderate / Severe	Limited Inspection	<input type="checkbox"/>
Protection System:	Creosote		
Condition Data:	Units	Exc.	Good
	Fair	Poor	Perform. Deficiencies
	m ² /m / each / % / all		67
			00
Comments:			
76 mm x 260 mm timbers. A few deck clips are damaged.			
Recommended Work:		Maintenance Needs:	
<input type="checkbox"/> Rehab <input type="checkbox"/> Replace		00	
<input type="checkbox"/> 1-5 years <input type="checkbox"/> 6-10 years		<input type="checkbox"/> Urgent <input type="checkbox"/> 1 year <input type="checkbox"/> 2 year	

Element Group:	Decks	Length:	
Element Name:	Drainage	Width:	
Location:		Height:	
Material:		Count:	
Element Type:		Total Quantity:	
Environment:	Benign / Moderate / Severe	Limited Inspection	<input type="checkbox"/>
Protection System:			Perform. Deficiencies
Condition Data:	Units	Exc.	Good
	Fair	Poor	
	m ² / m / each / % (all)	<input type="checkbox"/>	<input checked="" type="checkbox"/>
		<input type="checkbox"/>	<input type="checkbox"/>
Comments:			
Recommended Work:	<input type="checkbox"/> Rehab <input type="checkbox"/> Replace	Maintenance Needs:	00
	<input type="checkbox"/> 1-5 years <input type="checkbox"/> 6-10 years	<input type="checkbox"/> Urgent <input type="checkbox"/> 1 year <input type="checkbox"/> 2 year	

Element Group:	Foundations	Length:	
Element Name:	Foundation	Width:	
Location:		Height:	
Material:		Count:	
Element Type:		Total Quantity:	
Environment:	Benign / Moderate / Severe	Limited Inspection	<input type="checkbox"/>
Protection System:			Perform. Deficiencies
Condition Data:	Units	Exc.	Good
	Fair	Poor	
	m ² / m / each / % / all		
			00
Comments:			
Rated for performance only. West abutment appears to have settled.			
Recommended Work:	<input type="checkbox"/> Rehab <input type="checkbox"/> Replace	Maintenance Needs:	00
	<input type="checkbox"/> 1-5 years <input type="checkbox"/> 6-10 years	<input type="checkbox"/> Urgent <input type="checkbox"/> 1 year <input type="checkbox"/> 2 year	

Element Group:	Sidewalks/Curbs	Length:	12.15 m
Element Name:	Curbs	Width:	0.19 m
Location:	Both sides of bridge	Height:	0.19 m
Material:	Wood	Count:	2
Element Type:		Total Quantity:	12 sq. m.
Environment:	Benign / Moderate / Severe	Limited Inspection	<input type="checkbox"/>
Protection System:	CCA		Perform. Deficiencies
Condition Data:	Units	Exc.	Good
	Fair	Poor	
	(m ²) m / each / % / all		11
			1
			00
Comments:			
190mm x 190mm curb c/w 70 mm x 190 mm x 850 mm spacers @ 1.85 m centres. Light abrasion at south curb. Impact damage at southwest curb.			
Recommended Work:	<input type="checkbox"/> Rehab <input type="checkbox"/> Replace	Maintenance Needs:	00
	<input type="checkbox"/> 1-5 years <input type="checkbox"/> 6-10 years	<input type="checkbox"/> Urgent <input checked="" type="checkbox"/> 1 year <input type="checkbox"/> 2 year	
Replace damaged section of curb.			

Element Group:	Barriers	Length:	16.46 m			
Element Name:	Railing Systems	Width:				
Location:	North and South Sides	Height:	0.79 m			
Material:	Steel	Count:	2			
Element Type:	Steel Flex Beam on steel post	Total Quantity:	33 m			
Environment:	Benign / Moderate <u>Severe</u>	Limited Inspection	<input type="checkbox"/>			
Protection System:	Hot dip galvanizing					
Condition Data:	Units	Exc.	Good	Fair	Poor	Perform. Deficiencies
	m ² /m <u>each</u> / % / all		24		9	08
Comments: Majority of guide rail sections are lapped in the wrong direction. Impact damage at northwest and southeast end.						
Recommended Work:		<input type="checkbox"/> Rehab <input checked="" type="checkbox"/> Replace		Maintenance Needs:		00
		<input checked="" type="checkbox"/> 1-5 years <input type="checkbox"/> 6-10 years		<input type="checkbox"/> Urgent <input type="checkbox"/> 1 year <input type="checkbox"/> 2 year		
Remove guide rail and reinstall with laps in the proper direction.						

Element Group:	Barriers	Length:	0.152 m			
Element Name:	Posts	Width:	0.175 m			
Location:	North and South Sides	Height:				
Material:	Steel	Count:	9 per side			
Element Type:		Total Quantity:	18			
Environment:	Benign / Moderate <u>Severe</u>	Limited Inspection	<input type="checkbox"/>			
Protection System:						
Condition Data:	Units	Exc.	Good	Fair	Poor	Perform. Deficiencies
	m ² /m <u>each</u> / % / all		18			08
Comments: W150x37 posts at bridge. 190 mm x 190 mm timber posts c/w 190 mm x 190 mm offsets at corners. Insufficient thread projection at all post to guide rail bolts. One loose guide rail bolt at northwest corner.						
Recommended Work:		<input type="checkbox"/> Rehab <input checked="" type="checkbox"/> Replace		Maintenance Needs:		18
		<input checked="" type="checkbox"/> 1-5 years <input type="checkbox"/> 6-10 years		<input type="checkbox"/> Urgent <input type="checkbox"/> 1 year <input checked="" type="checkbox"/> 2 year		
Replace post to guide rail bolts.						

Element Group:	Beams/MLE's	Length:	12.15			
Element Name:	Girders	Width:	0.229 m			
Location:	U/S of Bridge	Height:	0.612 m			
Material:	Steel	Count:	7			
Element Type:	I-Type	Total Quantity:	163 sq. m.			
Environment:	Benign / <u>Moderate</u> Severe	Limited Inspection	<input type="checkbox"/>			
Protection System:						
Condition Data:	Units	Exc.	Good	Fair	Poor	Perform. Deficiencies
	m ² /m <u>each</u> / % / all		143	20		00
Comments: W610x125 girders spaced at 890 mm centres. Medium corrosion observed at west end along interior girders and at east end of exterior girder.						
Recommended Work:		<input type="checkbox"/> Rehab <input type="checkbox"/> Replace		Maintenance Needs:		00
		<input type="checkbox"/> 1-5 years <input type="checkbox"/> 6-10 years		<input type="checkbox"/> Urgent <input type="checkbox"/> 1 year <input type="checkbox"/> 2 year		

Element Group:	Beams/MLE's	Length:	0.875 m
Element Name:	Diaphragms	Width:	0.05 m diameter
Location:	End/Intermediate	Height:	
Material:	Steel	Count:	24
Element Type:	Rods	Total Quantity:	
Environment:	Benign / <u>Moderate</u> / Severe	Limited Inspection	<input type="checkbox"/>
Protection System:	Hot dip galvanizing	Perform. Deficiencies	
Condition Data:	Units	Exc.	Good
	m ² / m / <u>each</u> / % / all		24
Comments: Light corrosion.			
Recommended Work:	<input type="checkbox"/> Rehab <input type="checkbox"/> Replace	Maintenance Needs:	00
	<input type="checkbox"/> 1-5 years <input type="checkbox"/> 6-10 years	<input type="checkbox"/> Urgent <input type="checkbox"/> 1 year <input type="checkbox"/> 2 year	

Element Group:	Coatings	Length:	
Element Name:	Railing Systems/Hand Railings	Width:	
Location:		Height:	
Material:	Hot dipped galvanizing	Count:	
Element Type:		Total Quantity:	33 sq. m.
Environment:	Benign / <u>Moderate</u> / Severe	Limited Inspection	<input type="checkbox"/>
Protection System:		Perform. Deficiencies	
Condition Data:	Units	Exc.	Good
	<u>m²</u> / m / each / % / all		33
Comments:			
Recommended Work:	<input type="checkbox"/> Rehab <input type="checkbox"/> Replace	Maintenance Needs:	00
	<input type="checkbox"/> 1-5 years <input type="checkbox"/> 6-10 years	<input type="checkbox"/> Urgent <input type="checkbox"/> 1 year <input type="checkbox"/> 2 year	

Element Group:	Abutments	Length:	
Element Name:	Abutment Walls	Width:	8.5 m
Location:	East and West ends	Height:	2.1 m
Material:	Wood	Count:	2
Element Type:	Timbers	Total Quantity:	36 sq. m.
Environment:	Benign / <u>Moderate</u> / Severe	Limited Inspection	<input type="checkbox"/>
Protection System:	Creosote	Perform. Deficiencies	
Condition Data:	Units	Exc.	Good
	<u>m²</u> / m / each / % / all		36
Comments: Minor fill loss at west abutment. Medium fill loss at east abutment. West abutment rotation, 1.6 degrees west measured at top timber at southwest corner. Tree growing at south end of east abutment.			
Recommended Work:	<input checked="" type="checkbox"/> Rehab <input type="checkbox"/> Replace	Maintenance Needs:	18
	<input checked="" type="checkbox"/> 1-5 years <input type="checkbox"/> 6-10 years	<input type="checkbox"/> Urgent <input type="checkbox"/> 1 year <input checked="" type="checkbox"/> 2 year	
Monitor rotation at west abutment.		Remove tree.	

Element Group:	Abutments	Length:	
Element Name:	Ballast Walls	Width:	8.5 m
Location:		Height:	1.2 m
Material:	Wood	Count:	2
Element Type:		Total Quantity:	21 sq. m.
Environment:	Benign / <u>Moderate</u> / Severe	Limited Inspection	<input type="checkbox"/>
Protection System:	Creosote		
Condition Data:	Units	Exc.	Good
	m ² / m / each / % / all		21
		Fair	Poor
			14
Comments:			
90 mm x 90 mm timbers. Girders appear to be crushing ballast wall at ends. Fill loss behind ballast wall at southwest corner.			
Recommended Work:	<input checked="" type="checkbox"/> Rehab <input type="checkbox"/> Replace	Maintenance Needs:	18
	<input checked="" type="checkbox"/> 1-5 years <input type="checkbox"/> 6-10 years	<input type="checkbox"/> Urgent <input type="checkbox"/> 1 year <input checked="" type="checkbox"/> 2 year	
Provide fill at southwest corner.		Monitor crushing of ballast wall.	

Element Group:	Abutments	Length:	
Element Name:	Bearings	Width:	
Location:	Top of Abutments	Height:	
Material:	Neoprene	Count:	7 per abutment
Element Type:		Total Quantity:	14
Environment:	<u>Benign</u> / Moderate / Severe	Limited Inspection	<input type="checkbox"/>
Protection System:			
Condition Data:	Units	Exc.	Good
	m ² / m / <u>each</u> / % / all		11
		Fair	Poor
			00
Comments:			
All bearings at west end are crushed/bulging. Since elastomeric bearings are not required at this type of bridge, remedial repairs are not recommended. No bearings at 2 nd , 4 th , 6 th and 7 th girder at west end. All bearings present at east end.			
Recommended Work:	<input type="checkbox"/> Rehab <input type="checkbox"/> Replace	Maintenance Needs:	00
	<input type="checkbox"/> 1-5 years <input type="checkbox"/> 6-10 years	<input type="checkbox"/> Urgent <input type="checkbox"/> 1 year <input type="checkbox"/> 2 year	

Element Group:	Embankments & Streams	Length:	
Element Name:	Streams & Waterways	Width:	
Location:		Height:	
Material:		Count:	
Element Type:		Total Quantity:	
Environment:	<u>Benign</u> / Moderate / Severe	Limited Inspection	<input type="checkbox"/>
Protection System:			
Condition Data:	Units	Exc.	Good
	m ² / m / each / % / <u>all</u>	<input type="checkbox"/>	<input type="checkbox"/>
		Fair	Poor
		<input checked="" type="checkbox"/>	<input type="checkbox"/>
			13
Comments:			
Recommended Work:	<input type="checkbox"/> Rehab <input type="checkbox"/> Replace	Maintenance Needs:	18
	<input type="checkbox"/> 1-5 years <input type="checkbox"/> 6-10 years	<input type="checkbox"/> Urgent <input checked="" type="checkbox"/> 1 year <input type="checkbox"/> 2 year	
		Remove debris.	

Element Group:	Embankments & Streams	Length:				
Element Name:	Embankments	Width:				
Location:	4 corners	Height:				
Material:		Count:				
Element Type:		Total Quantity:	4			
Environment:	<u>Benign</u> / Moderate / Severe	Limited Inspection	<input type="checkbox"/>			
Protection System:	Vegetation					
Condition Data:	Units	Exc.	Good	Fair	Poor	Perform. Deficiencies
	m ² / m / <u>each</u> / % / all		4			00
Comments:						
Recommended Work:		<input type="checkbox"/> Rehab <input type="checkbox"/> Replace		Maintenance Needs:		00
		<input type="checkbox"/> 1-5 years <input type="checkbox"/> 6-10 years		<input type="checkbox"/> Urgent <input type="checkbox"/> 1 year <input type="checkbox"/> 2 year		

Element Group:	Embankments & Streams	Length:				
Element Name:	Slope Protection	Width:				
Location:	4 corners	Height:				
Material:		Count:				
Element Type:		Total Quantity:	4			
Environment:	<u>Benign</u> / Moderate / Severe	Limited Inspection	<input type="checkbox"/>			
Protection System:	Vegetation					
Condition Data:	Units	Exc.	Good	Fair	Poor	Perform. Deficiencies
	m ² / m / <u>each</u> / % / all		4			00
Comments:						
Recommended Work:		<input type="checkbox"/> Rehab <input type="checkbox"/> Replace		Maintenance Needs:		00
		<input type="checkbox"/> 1-5 years <input type="checkbox"/> 6-10 years		<input type="checkbox"/> Urgent <input type="checkbox"/> 1 year <input type="checkbox"/> 2 year		

Element Group:	Accessories	Length:				
Element Name:	Signs	Width:				
Location:	Four Corners and Approaches	Height:				
Material:		Count:	6			
Element Type:		Total Quantity:	6			
Environment:	Benign / <u>Moderate</u> / Severe	Limited Inspection	<input type="checkbox"/>			
Protection System:						
Condition Data:	Units	Exc.	Good	Fair	Poor	Perform. Deficiencies
	m ² / m / <u>each</u> / % / all		6			00
Comments:						
Two Narrow Bridge signs and four Hazard Marker signs.						
Recommended Work:		<input type="checkbox"/> Rehab <input type="checkbox"/> Replace		Maintenance Needs:		00
		<input type="checkbox"/> 1-5 years <input type="checkbox"/> 6-10 years		<input type="checkbox"/> Urgent <input type="checkbox"/> 1 year <input type="checkbox"/> 2 year		

Element Group:	Approaches	Length:	7 m			
Element Name:	Wearing Surfaces	Width:	5 m			
Location:	East and West Sides	Height:				
Material:	Asphalt	Count:	2			
Element Type:		Total Quantity:	70 sq. m.			
Environment:	Benign / Moderate <u>Severe</u>	Limited Inspection	<input type="checkbox"/>			
Protection System:						
Condition Data:	Units	Exc.	Good	Fair	Poor	Perform. Deficiencies
	<u>m²</u> /m / each / % / all			66	4	09
Comments: Gravel accumulation at both deck joints.						
Recommended Work:				Maintenance Needs:		
<input type="checkbox"/> Rehab <input type="checkbox"/> Replace <input type="checkbox"/> 1-5 years <input type="checkbox"/> 6-10 years				<input type="checkbox"/> Urgent <input checked="" type="checkbox"/> 1 year <input type="checkbox"/> 2 year		
				Remove gravel accumulation.		



Photo 1: East approach.



Photo 2: West approach.



Photo 3: Upstream elevation looking north.



Photo 4: Downstream elevation looking south.



Photo 5: Deck cross-section.



Photo 6: Underside of bridge.



Photo 7: East abutment and embankment.



Photo 8: West abutment and embankment.



Photo 9: Downstream view from bridge.



Photo 10: Upstream view from bridge.



Photo 11: Northeast embankment.



Photo 12: Northwest embankment.



Photo 13: Southeast embankment.



Photo 14: Southwest embankment.



Photo 15: Severe rot at wearing surface planks.



Photo 16: Impact damage at curb.



Photo 17: Gravel accumulation at corner of bridge.



Photo 18: Girders bearing on front of abutment at west end.



Photo 19: Crushing of ballast wall (typ.).



Photo 20: Gravel accumulation at bearing timber ends (typ.).



Photo 21: Damage deck clip (typ.).

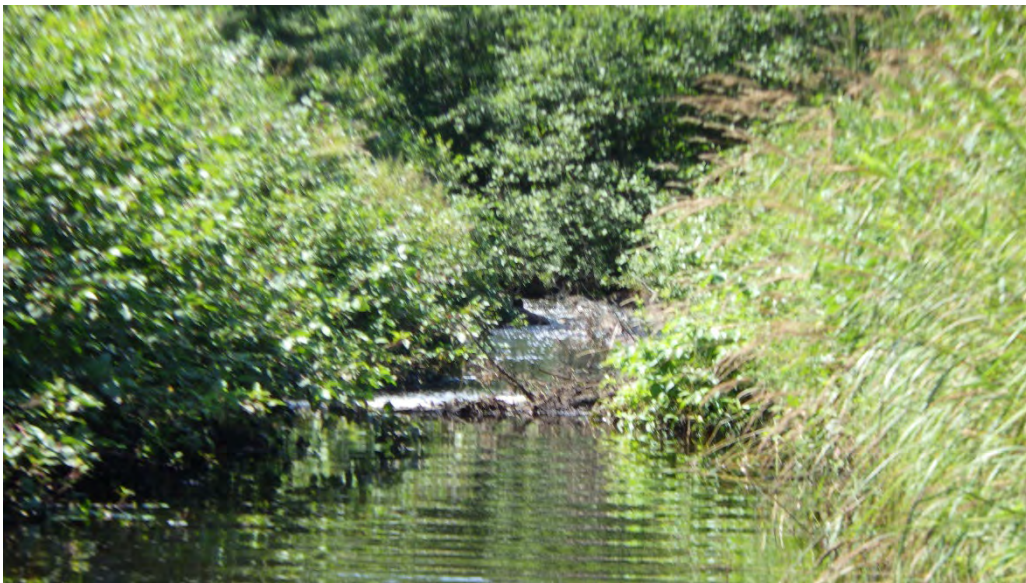


Photo 22: Beaver dam upstream of bridge.



Photo 23: Loose bottom bolt on southwest steel post.

THE CORPORATION OF TOWNSHIP OF CONMEE

BY-LAW NUMBER 2025-032

Being a By-law to appoint persons as Integrity Commissioners and to authorize the execution of agreements with the appointees.

Recitals:

Council considers it appropriate to appoint persons to fulfill the role of **Integrity Commissioner** as set out in the *Municipal Act, 2001*, S.O. 2001, c. 25, as amended.

ACCORDINGLY, THE COUNCIL OF THE CORPORATION OF THE TOWNSHIP OF CONMEE ENACTS AS FOLLOWS:

1. Form of Appointment:
To ensure that an external Integrity Commissioner is available to provide services when called upon to do so, more than one individual person is hereby appointed to this position.
2. Appointment for Integrity Commissioner:
The following persons are appointed as Integrity Commissioners for the Township of Conmee, effective January 1, 2026:
 - a. Mr. Robin L. Dunn
 - b. Mr. Kelly J. Pender
 - c. Mr. Reese Little
 - d. Mr. Cody Fraser
3. Designation of Primary Integrity Commissioner:
Mr. Cody Fraser is designated as the Primary Integrity Commissioner. The remaining appointees shall serve as Alternate Integrity Commissioners, to be engaged as needed based on availability, expertise, or conflict of interest.
4. Term of Appointment:
 - a. The appointment of Mr. Cody Fraser shall be for a term of one (1) year, renewable annually at the discretion of Council.
 - b. The appointments of Mr. Robin L. Dunn, Mr. Kelly J. Pender, and Mr. Reese Little shall be for a term of three (3) years, renewable at the discretion of Council.

5. Authority to Enter Agreements:

The Mayor and Clerk are authorized to enter into service agreements with the individuals appointed under this By-law, in form and content satisfactory to Council.

6. Effective Date:

This By-law shall come into force and take effect on the date that it is passed.

7. Repeal:

By-law #1256 is hereby repealed effective January 1st, 2026.

Passed this 23rd day of September, 2025.

Mayor Sheila Maxwell

Clerk Karen Paisley

THE CORPORATION OF THE TOWNSHIP OF CONMEE

BY-LAW # 2025-033

Being a By-law to confirm the proceedings of Council at its meeting.

Recitals:

Subsection 5(3) of the Municipal Act, 2001, S.O. 2001, Chapter 25, as amended, requires a municipal Council to exercise its powers by by-law, except where otherwise required.

Council from time to time authorizes action to be taken which does not lend itself to an individual by-law.

The Council of The Corporation of the Township of Conmee deems it desirable to confirm the proceedings of Council at its meeting by by-law to achieve compliance with the Municipal Act, 2001.

ACCORDINGLY, THE COUNCIL FOR THE CORPORATION OF THE TOWNSHIP OF CONMEE ENACTS AS FOLLOWS:

1. Ratification and Confirmation

The actions of this Council at its meeting held September 23rd, 2025, with respect to each motion, resolution and other action passed and taken by this Council at the meeting, are adopted, ratified and confirmed as if such proceedings and actions had been expressly adopted and confirmed by by-law.

2. Execution of all Documents

The Mayor of the Council and the proper officers of the Township are authorized and directed to do all things necessary to give effect to the actions authorized at the meeting, and/or to obtain approvals where required, and except where otherwise provided, the Mayor and Clerk are authorized and directed to execute all necessary documents and to affix the Corporate Seal of the Township to such documents.

Passed this 23rd day of September, 2025.

THE CORPORATION OF THE
TOWNSHIP OF CONMEE

Mayor Sheila Maxwell

Clerk Karen Paisley